



DCS-960L



**HD Ultra-Wide View Wi-Fi Camera
Quick Install Guide**

D-Link®

Package Contents



DCS-960L HD Ultra-Wide View Wi-Fi Camera



Power Adapter



Mounting Hardware



Quick Install Guide

If any of the above items are missing, please contact your reseller.

Minimum Requirements

Mobile Device (to use mydlink Lite app)

- iPhone, iPad, Android smartphone or tablet, or Windows Phone 8/8.1
(Refer to the mobile app's store page to see if your device is compatible)

Network Device and Service

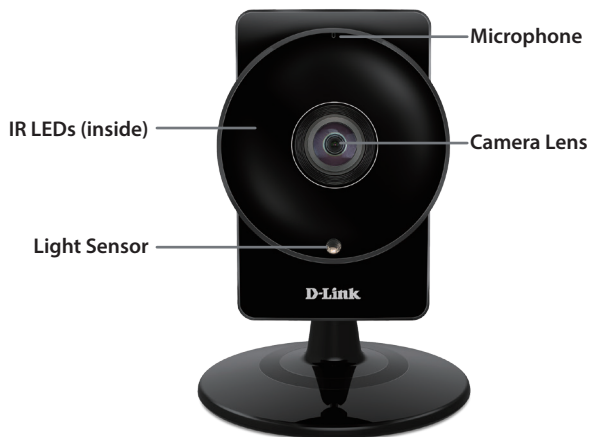
- A wireless router (802.11ac/n/g/a) with Internet service
- An e-mail account (required to create a mydlink® account)

** If you use a mobile device with the mydlink Lite app, a PC is not required for setup. Refer to Setting up Your Camera on page 4.*

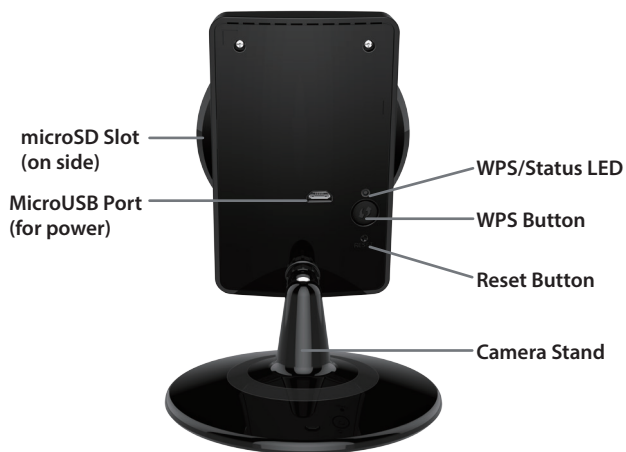
**For warranty and regulatory information, please visit:
<http://support.dlink.com/download.ashx?type=w&file=DCS-960L>**

Product Overview

Front



Back



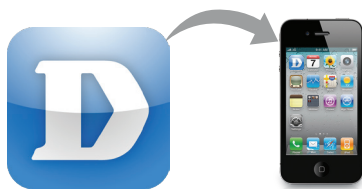
Setting Up Your Camera

- 1 Download the free mydlink Lite app on your smartphone or tablet by scanning the QR code below, or by searching for **mydlink Lite** in the app store for your device.



System Requirements: Refer to the mydlink Lite app page on the Apple App Store, Google Play, or Windows Phone Store.

- 2 Launch the mydlink Lite app, then create a new account or log in to your existing account.



- 3 The app will guide you through the rest of the configuration process.

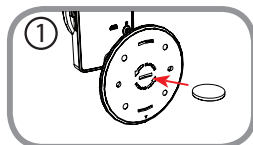
Mount the Camera

Please refer to the steps below to assist you with mounting the camera.

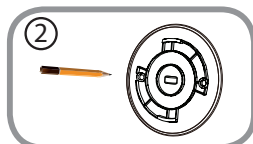


We suggest that you configure the camera before mounting.

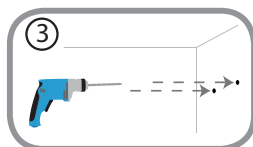
1. Turn the base plate on the bottom of the camera counterclockwise with a coin to remove it.



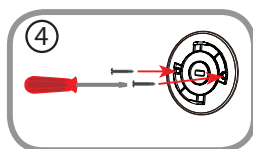
2. Place the base plate where you want to position the camera and use a pencil to mark the holes. Make sure the holes are lined up horizontally.



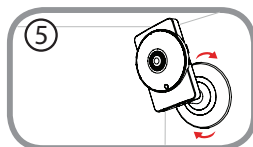
3. Depending on the material of the wall or ceiling, use proper tools to drill two holes 25mm deep with a 6mm drill bit where you marked. If the wall is made out of concrete, drill the holes first, then insert the plastic anchors to support the screws.



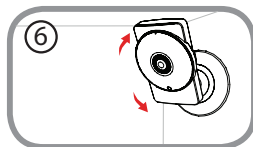
4. Place the base plate over the holes that are in the wall. Make sure to align the base plate holes with the holes in the wall. Use the supplied screws to attach the base plate to the surface of the wall. Do not overtighten screwheads as this may crack the mount.



5. Place the camera over the base plate and turn the camera clockwise to lock it in place.



6. Adjust the angle of the camera as desired.



FAQs

1. What is a mydlink No.? What is it used for?

Each camera has a unique eight-digit mydlink No. which will be shown on the label on the back of your camera. This eight-digit number identifies your device, and is required to add your device to your mydlink account.

2. What can I do if my DCS-960L is not working correctly?

- Reset the camera (see next step) and run the setup steps starting on page 4 again.
- To make sure your hardware is installed correctly, make sure that:
 - the WPS/Status LED is green
 - your Internet connection is working
 - your router's LAN & WAN connections are working
 - your router supports UPnP®
 - your camera is on the same network as your mobile device
 - both your mobile device and camera have a working Internet connection
- If your camera is still not working, check your router and make sure it has the latest firmware.

3. What can I do if I forget my password?

If you forget your password, you must reset the camera. Unfortunately, this process will change your settings back to factory default. To reset the camera, locate the reset button on the back of the camera. With the camera powered on, use an unfolded paper clip to hold the button down for 10 seconds. Run the setup procedure located on page 4 once the camera restarts.



4. Why is there a white haze when viewing in night vision mode?

When viewing in night vision mode, the IR lights on the camera may be reflecting off a nearby surface. Try repositioning the camera in order to avoid glare from IR LEDs.

Notes

Technical Support

This guide is only for initial configuration. Please refer to the user manual to learn more or visit <http://www.mydlink.com> for more information. Also feel free to contact us. U.S. and Canadian customers can contact D-Link Technical Support through our website.

USA



<http://support.dlink.com>

Canada



<http://support.dlink.ca>

D-Link[®]

Version 1.00(US)_90x130

August 15, 2015

29072600960LA11

Copyright ©2015 All rights reserved. D-Link and the D-Link logo are registered trademarks of D-Link Corporation or its subsidiaries. Other trademarks are the property of their respective owners. Maximum wireless signal rate derived from IEEE Standard 802.11ac and 802.11n specifications. Actual data throughput will vary. Network conditions and environmental factors, including volume of network traffic, building materials and construction, and network overhead, lower actual data throughput rate. Environmental factors will adversely affect wireless signal range. Product specifications, size and shape are subject to change without notice, and actual product appearance may differ from that depicted on the packaging. Visit dlink.com (US) or dlink.ca (Canada) for more details.
