

EPOS | SENNHEISER

EPOS Business Solutions

# ADAPT Headset Solutions

# Work your way

Modern workplaces are evolving every day – becoming more mobile, more versatile and more flexible. We created the ADAPT Line of premium audio tools to enable seamless transition between locations, enabling perfect concentration and collaboration, anytime and anywhere.

If you need an audio solution that can adapt quickly to changing and energetic situations, the ADAPT Line is designed and crafted to match your team's needs. Whether in the office, open workspaces, at home or on the go, every model in the series offers best-in-class audio quality and can adapt to any situation.

For professionals who want a headset that can take them beyond business calls, the series offers users excellent versatility in a variety of contemporary designs. From wireless functionalities and Active Noise Cancellation (ANC) to optimized music experiences while working, the ADAPT Line gives you the tools to take your business further.

# ADAPT Headset Solutions



**ADAPT 600 Series**  
Over-ear, headset  
Wireless Bluetooth®



**ADAPT 500 Series**  
On-ear, headset  
Wireless Bluetooth®



**ADAPT 400 Series**  
In-ear neckband headset  
Wireless Bluetooth®



**ADAPT 300 Series**  
Over-ear, headset  
Wireless Bluetooth®



**ADAPT 100 Series**  
On-ear, single-sided and  
double-sided wired headset



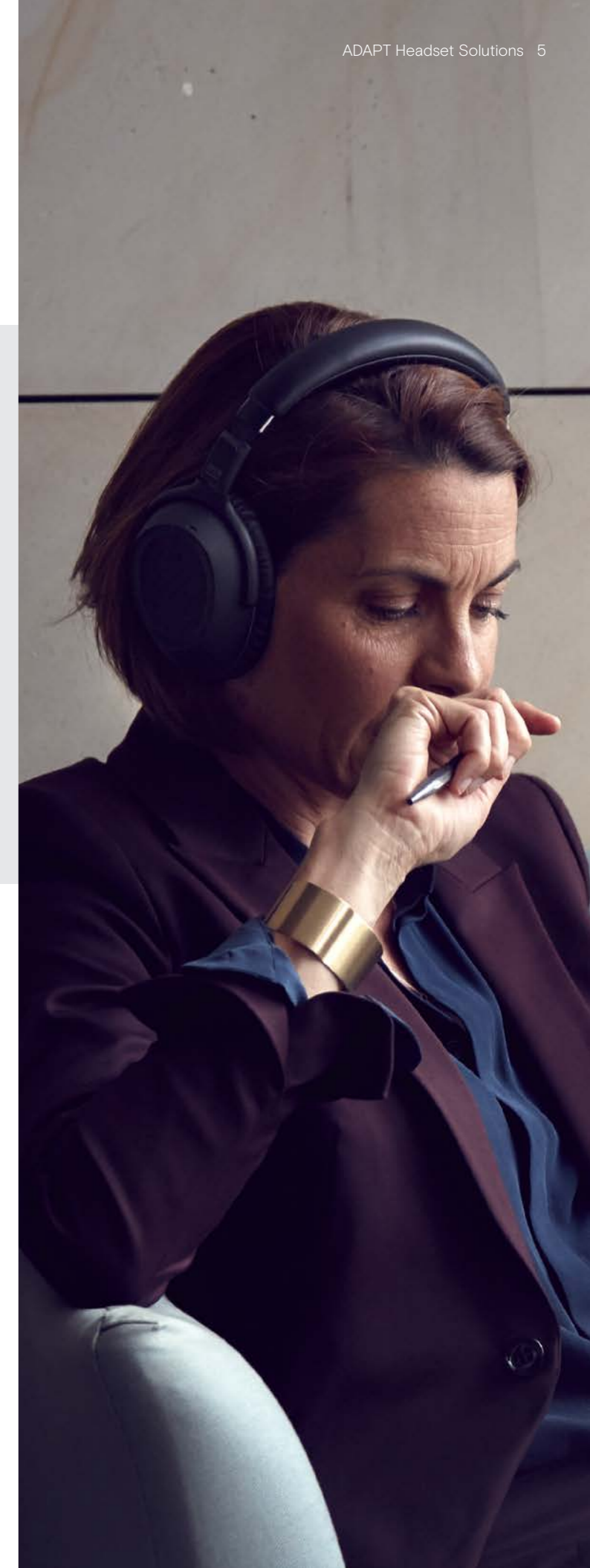
**ADAPT Presence Series**  
In-ear headset  
Wireless Bluetooth®

## Take perfect audio anywhere

Wherever your business takes you, the ADAPT Line is made to match your style, with contemporary ergonomic designs that fit today's flexible professional environment. Anywhere, anytime, it's possible to enhance concentration with headsets that provide truly impressive ANC, enabling your team to stay focused on the task at hand.

In the office or on-the-go, the ADAPT Line gives you a range of best-in-class portable solutions, enabling your team to work flexibly with wireless functionality and hassle-free device compatibility. State-of-the-art voice pickup technology enhances speech and eliminates unwanted background noise, in any environment. Not only that, exceptional microphone clarity delivers an excellent audio experience for both speaker and listener.

Demand audio experiences you can personalize, powered by EPOS AI™ – technology that automatically adapts to the way you speak, while studying your sound environment.



# ADAPT facts

We found that **25%\*** of professionals spend more than half of their day away from their desk. Which to us means: flexibility is not just a priority, it's a necessity.

With on-the-move workers in mind, **40%\*** of whom need to be able talk and walk, this unique series of devices was created to enable seamless transitions between desk, to car, to home and wherever else comes in between.

It's a fact that **58%\*** of these professionals regularly participate in conference calls. That's why the ADAPT Line ensures perfect collaboration, anytime and anywhere.

# 25%

Work away from desk



# 40%

Needs to be able to talk and walk



# 58%

Participate in conference calls



\* Insights report: "The way we work 2019"

# ADAPT 600 Series

## Work whenever, wherever

Maximize focus and productivity anywhere with a headset powered by EPOS AI™ for personal audio with superb call clarity, stereo sound and adaptive ANC. Enjoy a unique UC optimized solution with machine learning enhanced microphone performance. Adaptive ANC helps you regain concentration by monitoring your working environment and adjusts noise reduction accordingly, even reducing wind noise when outdoors so you can work efficiently whatever your situation. Get straight into collaborative work via a dedicated button that launches Microsoft Teams on your PC via the dongle included. Stay organized with Alexa voice assistant and connect simultaneously to mobile and PC. Whether revitalizing your open office, working on-the-go, or enjoying a relaxed commute, ADAPT 600 boosts efficiency and improves wellbeing for today's mobile workforce.



See more at [eposaudio.com/adapt-600](https://eposaudio.com/adapt-600)



## Key Benefits & Features

### Superb call clarity powered by EPOS AI™

Machine learning developed algorithms optimize voice pick up, for a natural listening experience from three advanced microphones

### Regain concentration anytime, anywhere

Four adaptive ANC microphone system monitors your working environment and adjusts noise reduction in open offices, while reducing wind noise outdoors

### Get organized with Alexa

Tap and hold to activate Alexa and stay on top of your day-to-day business. Never miss a meeting and plan your schedule both in and out of the office

### Ensure clear calls with UC certified solution

Certified for Microsoft Teams\* and optimized for UC

### Experience superior sound to increase your focus

Renowned stereo sound and a personalized audio profile means you can enjoy high-quality music to help your focus on work

## Additional benefits & features

### Switch effortlessly between your favorite devices

Enjoy multi-point connectivity via Bluetooth® to mobile and softphone simultaneously. BTD 800 USB dongle connects to your PC

### Dedicated button for Microsoft Teams

One press launches Microsoft Teams on PC via BTD 800 USB dongle

### Stay in touch with your surroundings

EPOS Voice™ technology for listening to colleagues without removing the headset

### Enhanced call quality

With advanced sidetone algorithms that remove background noise and improve your call experience

### Benefit from 30 hours of battery life\*\*

Reliable performance wherever and however you work

### Designed for mobile workers

Fold flat design with rotating ear cups to switch on and off

### Simply swipe and tap

Features a touch pad for easy, efficient call and media control

### Convenient charging and headset storage

All charging and wired connectivity accessories come in a handy headset carry case

### Enjoy high-quality streaming

High-quality streaming with AptX®

### Manage updates and settings on-the-go

Get updates and select Voice Assistant and audio profile on the go via the app

\* Pending certification

\*\* ANC on, Bluetooth® off



**EPOS AI™ – for a personalized audio experience**  
 Communicate flawlessly thanks to EPOS AI™ that learns the way you speak while studying your environment



**Call and media controls direct from the touch pad**  
 Answer/end call, reject, hold, mute/unmute, redial.  
 Play/pause music, change track, volume up or down.



**Sound effect modes and adaptive ANC controls**  
 Create your own audio profile to get the best personalized sound for speech, music and entertainment with sound effect modes.  
 Personalize your own level of noise cancellation.



**Bluetooth® pairing and control**  
 Instant flight mode (just plug in the audio jack).  
 Bluetooth® on/off. NFC pairing.



## Comparison overview

### ADAPT 600 Series



ADAPT 660

<b>Art. no.</b>	1000200
<b>Wearing style</b>	
Double-sided headset	•
Headband	•
Over-the-ear	•
Large pillow-soft leatherette ear pads	•
<b>Connectivity</b>	
Softphone/PC	•
Mobile phone	•
Tablet	•
Multi-point connectivity*	•
<b>Microphone</b>	
Digital MEMS beamforming microphone (3 microphones)	•
<b>Features &amp; technologies</b>	
Hybrid adaptive ANC technology with 4 microphones	•
EPOS ActiveGard® technology	•
SpeakFocus™ technology	•
WindSafe™ technology	•
TalkThrough™ technology	•
Multimedia and music listening	•
USB dongle	•
Carry case	•
<b>Unified communications</b>	
Optimized for UC	•
Microsoft Teams**	•

\*Connects up to two devices at the same time

\*\* Pending certification. Microsoft Teams certification applies when USB/USB-C dongle or cable is connected to PC or Mac.

# ADAPT 500 Series

## Stay agile, achieve more

Cut through the noise and make your presence felt with a headset that keeps you productive in open offices, or on the move. Get clearer calls with the discreet boom arm for excellent speech intelligibility and use ANC in noisy situations to focus.

Whether on a business call or focusing at your desk, multi-connectivity helps you switch between your two favorite Bluetooth® devices. The soft, on-ear wearing style creates all-day comfort and the portable design gives you a handy, stylish, yet business grade audio tool. UC optimized and Microsoft Teams certified\*, the ADAPT 500 Series delivers on every professional parameter and offers excellent stereo music performance during your working day. With up to 46 hours of battery life, you can rely on a headset that adapts to the way you work and boosts your productivity.



See more at [eposaudio.com/adapt-500](https://eposaudio.com/adapt-500)

## Key Benefits & Features

### Get clearer calls on demand

The discreet, foldable boom arm and two advanced microphones optimize voice pick up for clearer office and mobile calls

### Concentrate anytime, anywhere with ANC

Four ANC microphones reduce background noise to increase work focus, together with plush ear pads for good sound isolation

### Ensure clear calls with UC certified solution

Certified for Microsoft Teams\* and optimized for UC

### Work your way

Portable design that works the way you do with discreet boom arm, music performance, noise cancellation and long battery life

### Enjoy comfort and convenience

Soft, on-ear wearing style for all-day comfort. Ear cups rotate and dual-foldable design fits neatly into the handy carry case



## Additional benefits & features

### Smart discrete boom arm

Can be folded away into the headband when not in use

### Switch effortlessly between your favorite devices

Enjoy multi-point connectivity via Bluetooth® to mobile and softphone simultaneously. BT-D 800 USB dongle connects to your PC

### Launch Microsoft Teams instantly

Dedicated button for Microsoft Teams via BT-D 800 USB dongle

### Stay in touch with your surroundings

EPOS Voice™ technology enables you to interact without removing the headset

### Up to 46 hours battery life

Reliable performance wherever and however you work

### Store easily with portable carry case

Compact carry case includes USB dongle and USB-C cable

\* Pending certification



# Comparison overview

## ADAPT 500 Series



ADAPT 560



ADAPT 563

Art. no.	1000207	1000208
<b>Wearing style</b>		
Double-sided headset	•	•
Headband	•	•
Over-the-ear	•	•
<b>Connectivity</b>		
Softphone/PC	•	•
Mobile phone	•	•
Tablet	•	•
<b>Microphone</b>		
2 beamforming MEMS microphones	•	•
<b>Features &amp; technologies</b>		
Hybrid ANC technology with 4 microphones	•	•
EPOS ActiveGard® technology	•	•
Multimedia and music listening	•	•
USB dongle	•	•
Carry case	•	•
<b>Unified communications</b>		
Optimized for UC	•	•
Microsoft Teams*	•	•

\* Pending certification. Microsoft Teams certification applies when USB/USB-C dongle or cable is connected to PC or Mac.



# ADAPT 400 Series

## Take great sound anywhere

Keep moving, stay focused and be productive with an in-ear, neckband headset that delivers rich, natural sound and ANC whether at work or commuting. Tune into clear business calls anywhere, anytime, with a subtle vibrating neckband that means you'll never miss a call. Enjoy ANC that reduces background noise in any situation to boost your concentration. From noisy office to airport lounge, make sure you are heard thanks to noise-cancelling microphones that optimize speech and reduce background noise on the move.

Enjoy style and function with the first EPOS UC optimized neckband headset, crafted for comfort with a choice of ear tips for the perfect fit. With multi-connectivity to your two favorite devices this is a headset that keeps you truly mobile and professional.



See more at [eposaudio.com/adapt-400](https://eposaudio.com/adapt-400)

## Key Benefits & Features

### Boost your productivity with ANC

Your in-ear neckband headset to maintain concentration in noisy environments with an advanced four microphone ANC system

### Clear business calls – UC optimized solution

Impressive sound with a Microsoft Teams certified\*/UC optimized solution and subtle vibrating neckband signaling incoming calls

### Enjoy superior comfort and fit

Lightweight construction and comfortable earbuds with a choice of four ear tips, plus versatile single or double-sided use

### Stay connected to your favorite devices

Multi-point connectivity to two actively paired Bluetooth® devices and eight devices in the pairing list

### Talk all day

With up to 14 hours of talk time



## Additional benefits & features

### Bluetooth® dongle

For great Bluetooth® connectivity to laptops

### Ease of use

Buttons to access frequent UC function such as mute and Voice Assistant etc.

### Easy transportation and storage

With a hard case to store and protect your headset

### Stay in touch with your surroundings

EPOS Voice™ technology for listening to colleagues without removing the headset.

### Never miss a call

Thanks to the vibrating neckband



## Comparison overview

### ADAPT 400 Series



ADAPT 460



ADAPT 460T

Art. no.	1000204	1000205
<b>Wearing style</b>		
Single and double-sided wearing style	•	•
In-ear neckband Bluetooth® headset with ANC	•	•
<b>Connectivity</b>		
Softphone/PC	•	•
Mobile phone	•	•
Tablet	•	•
Multi-point connectivity*	•	•
<b>Microphone</b>		
2 beamforming MEMS microphones	•	•
<b>Features &amp; technologies</b>		
Hybrid ANC technology with 4 microphones	•	•
EPOS ActiveGard® technology	•	•
Multimedia and music listening	•	•
USB dongle	•	•
Carry case	•	•
<b>Unified communications</b>		
Optimized for UC	•	
Microsoft Teams**		•

\* Connects to two actively paired Bluetooth® devices and eight devices in the pairing list, Bluetooth® 5.0

\*\* Pending certification. Microsoft Teams certification applies when USB/USB-C dongle or cable is connected to PC or Mac.

# ADAPT 300 Series

## Work your way in style

Stay focused with ANC that reduces background noise, helps you concentrate in busy open offices and boosts productivity on-the-go. Ensure clear business calls with a solution optimized for UC and switch easily between devices as you multitask.

Enjoy over-the-ear design and ergonomic ear pads that add noise dampening and long-lasting comfort. Wherever your work schedule takes you, performance and convenience are on hand with up to 46 hours of battery life and foldable design that is easy to store and pack. Empower your performance with professional quality and sleek, comfortable design in black or white to suit your style. With the option of EPOS Manager and EPOS Connect software, you can ensure optimal functionality. Insist on a headset with great audio that's built to last and will help you excel in today's workplace.



See more at [eposaudio.com/adapt-300](https://eposaudio.com/adapt-300)

## Key Benefits & Features

### Concentrate in noisy environments

Thanks to Active Noise Cancellation that reduces background noise to increase your work focus

### Ensure clear calls with certified solution

Certified for Microsoft Teams\* and optimized for UC

### Switch effortlessly between your favorite devices

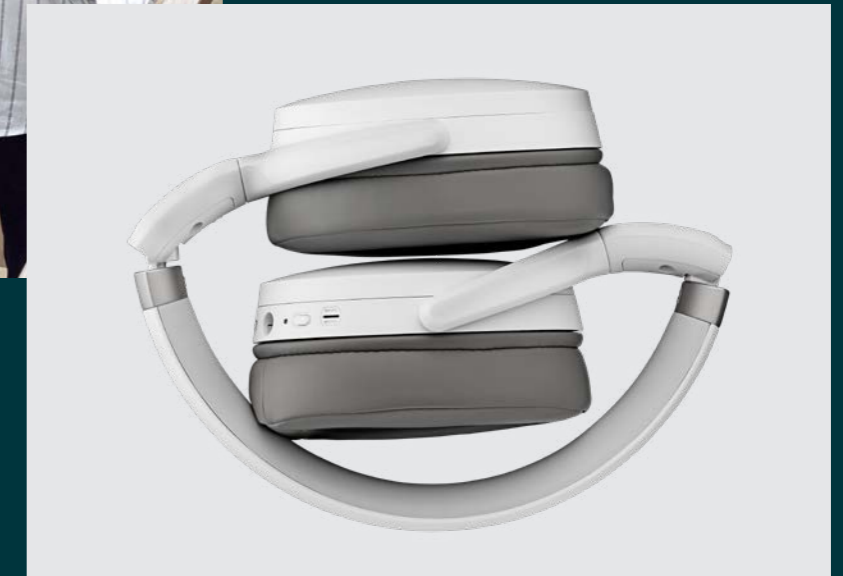
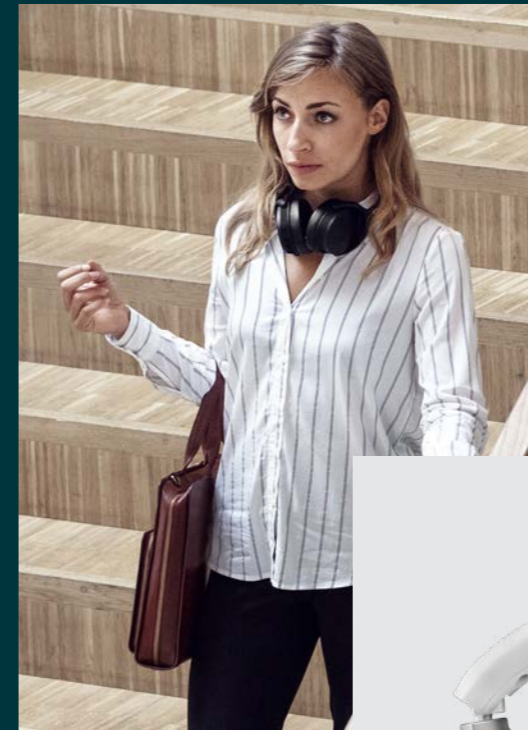
With multi-point connectivity to any two Bluetooth® devices simultaneously

### Enjoy stylish, comfortable design

On and off work with a contemporary look in black or white and soft, ergonomic ear pads for lasting comfort

### High-quality stereo sound and reliable performance

Stream stereo music at work or on your commute and benefit from up to 46 hours of battery life



## Additional benefits & features

### Launch Microsoft Teams instantly

Dedicated button for Microsoft Teams via BT-D 800 USB dongle

### Clearer office and mobile calls

From two advanced microphones that optimize voice pick up wherever you are

### Reduce distracting noise

Excellent noise dampening from large ear cups

### Convenient and extremely portable

Due to a robust, foldable headset design

### Protect your headset

With a convenient storage pouch

### Benefit from easy charging

Via USB cable with USB-C connector

### Firmware updates when it suits you

Via EPOS Manager and EPOS Connect software



# Comparison overview

## ADAPT 300 Series



ADAPT 360



ADAPT 360 white

Art. no.	1000209	1000210
<b>Wearing style</b>		
Double-sided headset	•	•
Headband	•	•
Over-the-ear	•	•
Large thick leatherette ear pads	•	•
<b>Connectivity</b>		
Softphone/PC	•	•
Mobile phone	•	•
Tablet	•	•
<b>Microphone</b>		
2 beamforming MEMS microphones	•	•
<b>Features &amp; technologies</b>		
Active Noise Cancellation (ANC)	•	•
EPOS ActiveGard® technology	•	•
Multimedia and music listening	•	•
USB dongle	•	•
Storage pouch	•	•
<b>Unified communications</b>		
Optimized for UC	•	•
Microsoft Teams*	•	•

\* Pending certification. Microsoft Teams certification applies when USB/USB-C dongle or cable is connected to PC or Mac.

# ADAPT Presence

With ADAPT Presence you get the best of both worlds: You get the benefit of superb sound and your listener gets to hear you clearly – no matter where you're calling from.

ADAPT Presence intelligently adapts to different environments with its 3-digital noise-cancelling microphones that work seamlessly together with EPOS' advanced Own-Voice-Detector, SpeakFocus™ and WindSafe™ technologies to ensure crystal clear audio wherever. From a noisy office, through a windy car-park to your car, Presence takes background noise in its stride and adapts seamlessly to give the consistent listening experience that professional communication demands.



See more at [eposaudio.com/adapt-presence](https://eposaudio.com/adapt-presence)

## Key Benefits & Features

### Hear and be heard. Wherever.

Best in class 3-digital noise-cancelling microphones and noise filtering technologies.

### Longest talk time

Up to 10 hours' narrowband and 8 hours' wideband call time between charges.

### Call handling made easy

Intuitive on/off and answer/end function with sliding microphone boom arm.

### Increased comfort

A flexible choice of wearing styles and optional headband.

### Voice controlled

Tap into into Siri and Google Assistant and be online at the touch of a button.

## Additional benefits & features

**Convenient storage** – carry case for headset, dongle and USB charging cable

**Multi-connectivity** – seamlessly switch between PC/softphone and mobile calls

**Increased range** – up to 25 meters depending on device and environment

**Lightweight iconic design** – looks as good as it sounds

## Comparison overview ADAPT Presence Series



ADAPT Presence Grey UC



ADAPT Presence Grey Business

Art. no.	508342	508341
<b>Wearing style</b>		
Single-sided headset	•	•
Ear hook or ear sleeve	•	•
Headband	[.]	[.]
<b>Connectivity</b>		
Softphone/PC	•	•
Mobile phone	•	•
Tablet	•	•
Multi device connectivity*	•	•
<b>Microphone</b>		
3 digital noise-cancelling microphones	•	•
<b>Features &amp; technologies</b>		
Advanced Own-Voice-Detector	•	•
SpeakFocus™ technology	•	•
WindSafe™ technology	•	•
EPOS ActiveGard® technology	•	•
USB dongle	•	[.]
Carry case	•	
Charger stand	[.]	[.]
<b>Unified communications</b>		
Optimized for UC	•	
Skype for Business Certified	•	

[.] Available as optional accessories. ADAPT Presence headband (Art. no. 506476), CH 20 MB headset charger stand (Art. no. 506039)

\* Connects up to two devices at the same time

# ADAPT 100 Series

## Activate your potential

With a stylish, functional headset that works the way you do. Enjoy superior sound and contemporary design with an audio tool that adapts seamlessly to your needs – at your workstation, around the office or on your daily commute.

Experience flexibility and comfort, with a discreet boom arm design, adjustable fit and a choice of large, soft ear pads. EPOS Voice™ technology and a noise-cancelling microphone optimizes speech, and stereo sound for your music at work helps you concentrate on more focused tasks. A convenient solution, the fold flat design and carry pouch make it easy to take with you and boost productivity whatever your working environment. Designed with your wellbeing in mind, ADAPT 100 has the flexibility to adapt to your varied working schedule; performing with excellence to enable you to do the same.

See more at [eposaudio.com/adapt-100](https://eposaudio.com/adapt-100)



## Key Benefits & Features

### Stylish design for work or on-the-go

With a contemporary look and pivoting boom arm that folds discreetly into the headband

### Experience great sound for calls and multimedia

With stereo sound while working

### Enjoy flexible device connectivity

With options of 3.5 mm jack, USB-A or USB-C

### Easy to store and portable

Thanks to an innovative fold-flat ear cup design and carry pouch

### Maximize your comfort

With large on-ear leatherette or foam ear pads for noise dampening

## Additional benefits & features

### Optimize speech clarity

With noise-cancelling microphone to filter out ambient noise

### Enjoy a natural listening experience

With EPOS Voice™ technology

### Personalize for a perfect fit

With an adjustable, flexible headband

### Protect your hearing

From acoustic shock with EPOS ActiveGard® technology

## Comparison overview

### ADAPT 100 Series



Art. no.	508356	508355	508317	508316	508319	508318	508354	508353	508315	508314
<b>Wearing style</b>										
Single-sided		•		•		•		•		•
Double-sided	•		•		•		•		•	
Headband	•	•	•	•	•	•	•	•	•	•
On-the-ear	•	•	•	•	•	•	•	•	•	•
Large leatherette ear pads	•	•	•	•	•	•				
Large acoustic foam ear pads							•	•	•	•
<b>Connectivity</b>										
Softphone/PC via USB			•	•					•	•
Softphone/PC via USB-C	•	•					•	•		
Mobile phone via 3.5 mm jack	•	•	•	•	•	•				
Tablet via 3.5 mm jack	•	•	•	•	•	•				
<b>Microphone</b>										
Noise-cancelling microphone	•	•	•	•	•	•	•	•	•	•
Hideable boom arm	•	•	•	•	•	•	•	•	•	•
<b>Features &amp; technologies</b>										
In-line call control unit	•	•	•	•			•	•	•	•
Optimized for calls & multimedia	•	•	•	•	•	•	•	•	•	•
EPOS ActiveGard® technology	•	•	•	•	•	•	•	•	•	•
Carry pouch	•	•	•	•						
Noise at Work, (EU directive)*	•	•	•	•	•	•	•	•	•	•
<b>Unified Communications</b>										
Optimized for UC	•	•	•	•			•	•	•	•
Skype for Business Certified**	•	•	•	•			•	•	•	•

\* In compliance with EU Noise at Work legislation, EU Noise at Work Directive (Directive 2003/10/EC)

\*\* Skype for Business Certification applies when USB/USB-C is connected to PC or Mac

# Comparison guide

## ADAPT Solutions

• = Yes  
 (-) = Option available with additional accessory

Headset category	ADAPT 660	ADAPT 563	ADAPT 560	ADAPT 460	ADAPT 460T	ADAPT 360	ADAPT PRESENCE GREY UC	ADAPT PRESENCE GREY BUSINESS	ADAPT SC 165 USB-C	ADAPT SC 135 USB-C	ADAPT SC 165 USB	ADAPT SC 135 USB	ADAPT SC 165	ADAPT SC 135	ADAPT SC 160 USB-C	ADAPT SC 130 USB-C	ADAPT SC 160 USB	ADAPT SC 130 USB
Wireless Bluetooth® headset	•	•	•	•	•	•	•	•										
Wired headset									•	•	•	•	•	•	•	•	•	•
<b>Connectivity</b>																		
via Bluetooth®	•	•	•	•	•	•	•	•										
via USB	•	•	•								•	•						•
via USB-C									•	•					•	•		
via 3.5 mm jack	•					•			•	•	•	•	•	•				
Multi-point connectivity*	•	•	•	•	•	•	•	•										
<b>Devices</b>																		
Softphone/PC	•	•	•	•	•	•	•	•	•	•	•	•	•	•	•	•	•	•
Mobile phone	•	•	•	•	•	•	•	•	•	•	•	•	•	•	•	•	•	•
Tablet	•	•	•	•	•	•	•	•	•	•	•	•	•	•	•	•	•	•
<b>Microphones</b>																		
3 digital MEMS beamforming microphones	•						•	•										
2 beamforming MEMS microphones		•	•	•	•	•												
Noise-cancelling microphone									•	•	•	•	•	•	•	•	•	•
Hideable boom arm	•	•							•	•	•	•	•	•	•	•	•	•
<b>Features &amp; technologies</b>																		
Adaptive Active Noise Cancellation (ANC)	•																	
Hybrid Active Noise Cancellation (ANC)		•	•	•	•													
Feedback Active Noise Cancellation (ANC)							•											
EPOS ActiveGard® technology	•	•	•	•	•	•	•	•	•	•	•	•	•	•	•	•	•	•
SpeakFocus™ technology	•						•	•										
WindSafe™ technology	•						•	•										
TalkThrough™ technology	•	•	•	•	•	•												
In-line call control unit									•	•	•	•			•	•	•	•
Multimedia and music listening	•	•	•	•	•	•			•	•	•	•	•	•	•	•	•	•
USB dongle	•	•	•	•	•	•	•	(-)										
Charger stand							(-)	(-)										
Noise at Work, (EC directive)**	•	•	•	•	•	•			•	•	•	•	•	•	•	•	•	•
Software upgrade support	•	•	•	•	•	•	•	•	•	•	•	•	•	•	•	•	•	•
<b>Wearing style</b>																		
Single-sided headset							•	•	•	•	•	•	•	•	•	•	•	•
Double-sided headset	•	•	•	•	•	•			•	•	•	•	•	•	•	•	•	•
Ear hook or ear sleeve							•	•										
Headband	•	•	•	•	•	•	(-)	(-)	•	•	•	•	•	•	•	•	•	•
Over-the-ear	•					•												
On-the-ear		•	•						•	•	•	•	•	•	•	•	•	•
In-ear				•	•		•	•										
<b>Unified communications</b>																		
Optimized for UC	•	•	•	•	•	•	•	•	•	•	•	•	•	•	•	•	•	•
Microsoft Teams***	•	•	•	•	•	•												

\* Connects up to two devices at the same time

\*\* In compliance with EU Noise at Work legislation. EU Noise at Work Directive (Directive 2003/10/EC)

\*\*\* Pending certification. Microsoft Teams certification applies when USB/USB-C dongle or cable is connected to PC or Mac.

All EPOS Communications headsets are covered by a 2-year international warranty for maximum peace of mind.





# Our Sound Technologies

Innovation you can hear



# EPOS Technology

We divide our technologies into 3 subcategories: EPOS AI™, EPOS Sound™ and EPOS Voice™ to ensure a clear understanding of our technical spectrum at all ends. Our technologies span over the range of Artificial Intelligence to Sound Experience and Microphone Performance.

## EPOS AI™

From a technology perspective: we never stand still. We are in constant search for new opportunities to further explore the power of audio. With our user in mind, we implemented Edge AI. A machine learning system embedded in the device that processes data and takes decisions independently, therefore, giving the device the ability, to automatically adapt to your hearing and voice while studying your environment. This technology within EPOS AI™ will then successfully limit your exposure to excessive sounds and, thus, relieve your auditory system to focus on what matters most.

## EPOS Sound™

EPOS Sound™ makes the most out of your premium audio device by delivering a natural listening experience. Through continuous monitoring of ambient sound and varying noise levels, our technology helps you to concentrate while taking care of your hearing: creating an augmented and immersive audio experience that sounds as if you are speaking to someone face-to-face or are right there in the same environment. For more focus, block out background noise with ease and enjoy the benefits of EPOS Sound™ – while watching your performance and energy levels rise.

## EPOS Voice™

EPOS Voice™ improves your speech intelligibility and provides for a better conversation by creating an acoustical lens to focus on your speech. Through removing remaining noise disturbances, it ensures a more natural reproduction of the human voice. EPOS Voice™, furthermore, recognizes your environment in order to eliminate unpleasant background noise to clarify your sound picture. With optimal control of noise levels, this technology allows for an effortless use of your digital voice assistants anytime, anywhere.



# EPOS Voice™ technology

The natural listening experience



For the best possible communication between caller and listener, EPOS Voice™ technology uniquely enhances the most important frequencies and details of the human voice. For the caller, sound is crisper and clearer, allowing them to hear the

nuances contained in spoken conversation; for the listener, a noise-cancelling microphone sends the clearest signal to improve speech intelligibility. In combination this results in better, more natural sounding conversations where no important details are lost.



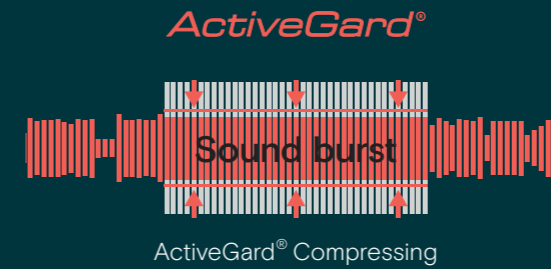
Play sound without EPOS Voice™



Play sound with EPOS Voice™

# EPOS ActiveGard® technology

Hearing protection



During the course of a day, headset users may be exposed to seldom, but hazardous incoming noises that can be dangerous to their hearing. Technically referred to as a sound burst, this can potentially cause long-lasting damage to the human ear.

To safeguard users, all EPOS headsets for contact center and office environments are equipped with innovative EPOS ActiveGard® technology.



Play sound without EPOS ActiveGard®



Play sound with EPOS ActiveGard®

Please be warned that the sound without EPOS ActiveGard® can be extremely high. We recommend the volume should be set low when playing.

# SpeakFocus™ technology

The ADAPT Presence and ADAPT 600 Series headsets automatically adapt to environmental differences to deliver the best sound possible with the help of SpeakFocus™ and WindSafe™ technologies.



# WindSafe™ technology



You never know when that important call will come. Be confident that wherever you take it – on the road, on the street or in the check-in queue, your voice can be clearly heard.

SpeakFocus™ technology focuses on your voice to deliver a crystal clear sound that enhances speech intelligibility for your listeners.

The unique 3 digital microphone system in the ADAPT Presence and ADAPT 660 headsets focuses on the target sound

– your voice – to deliver a calm, steady sound picture, which enhances voice intelligibility for listeners.

SpeakFocus™ technology ensures that your listener receives all the important details of your call to reduce misunderstandings – no matter where you are calling from.

The technology zooms in on your voice, works in all sound environments and adapts intelligently whatever the environment.

Wind noise can make it hard to hear what people are saying on the phone. However, it's the sender that causes the problem not the receiver. Even the best microphones can suffer during breezy conditions, making sound and voices indistinct and difficult to understand. With WindSafe™ technology, you can be sure that your listener won't be troubled by wind noise and that your message gets through, no matter what the weather forecast says.

WindSafe™ technology reduces wind noise to ensure the clearest possible sound is sent to your listener. By choosing the best mix of three microphones and processing the sound, WindSafe™ technology finds the best way to balance and enhance the user's voice when speaking outside in windy conditions.



Play sound without SpeakFocus™



Play sound with SpeakFocus™



Play sound without WindSafe™



Play sound with WindSafe™

# EPOS Manager

## Empower your business anywhere

Save valuable time and make life simpler and smarter for your IT department, your business and your colleagues. By keeping you in touch with all your EPOS devices, EPOS Manager puts you in control of your company's UC environment in three key areas:



### Asset Management

*Get the overview*

See all your devices on the dashboard; from headsets to speakerphones and even non-EPOS devices. All users are registered in the system, which shows both active and inactive devices – who is using which device and how they are being used. Simply reallocate redundant resources to boost productivity. Reports on usage and firmware compliance keep you in complete control of company assets.



### Update Management

*Less downtime, more convenience*

A flexible and cost-effective way to get the latest firmware updates to all your organization's EPOS devices, whenever it's convenient for you and your end-users. Push new updates to an unlimited number of devices across your organization from one simple dashboard. Schedule your automated updates to cause minimum downtime and disruption to your company's workflow.



### Configuration Management

*Easy for you, easy for end-users*

The centralized configuration option allows all settings to be controlled from the IT department, ensuring that headset user's experience a simple plug and play solution. You can centrally push configurations or lock specific specifications on EPOS devices to comply with regulatory compliance settings for specific groups or individuals.



## EPOS Manager for IT administrators

EPOS Manager has been developed for companies with a need to control their UC environment in a fast and secure way. By installing the client application, EPOS Connect, on your end users' PCs, you gain a complete overview of all deployed devices and access to new updates and settings.

For companies with several locations, it's possible to manage, update and control settings for all end-users in the entire organization. For improved security, all communication and data are encrypted and no sensitive data is stored.

The resulting simplification of the asset, update and configuration management gives great savings in both time and money.

## EPOS Connect for headset users

EPOS Connect is the client application running in the background on the headset user's PC. The solution ensures that EPOS headsets and speakerphones work seamlessly with various leading softphones and give you access to the latest firmware updates and personalized settings.

EPOS Connect is uniquely configured to either work together with a signed-up company account on EPOS Manager or as a stand-alone application for smaller companies or personal use.

Designed to be simple to use, the application allows EPOS headset and speakerphone users to enhance and personalize their experience and productivity simply and quickly.



## Service and Support

We've got you covered

EPOS Global Service and Support aims at providing a premium customer experience to all our customers across the world. With a standardized support process across all channels, we can guarantee a uniform, consistent, structured and high quality handling for all support requests, from either end user, resellers, distributors, country partners or subsidiaries, throughout the world.

Visit our Support Portal here:  
[eposaudio.com/enterprise/support](https://eposaudio.com/enterprise/support)

E-mail:  
[contact@eposaudio.com](mailto:contact@eposaudio.com)

## Experience EPOS

Try our headsets first hand

The EPOS professional trial program gives you the opportunity to test and experience our range of headsets and speakerphones before you decide on the best choice for your office, contact center or Unified Communication solution.

[eposaudio.com/try](https://eposaudio.com/try)



# Glossary

## Sound Quality

**SpeakFocus™ technology** ensures that your listener receives all the important details of your call to reduce misunderstandings – no matter where you are calling from. The technology zooms in on your voice, works in all sound environments and adapts intelligently whatever the environment – for instance in the car, in the office, at a seminar or at the airport.

**WindSafe™ technology** reduces wind noise to ensure the clearest possible sound is sent to your listener. By choosing the best mix of three microphones and processing the sound, WindSafe™ technology finds the best way to balance and enhance the user's voice when speaking outside in windy conditions.

**TalkThrough™ Technology** gives you the option of being able to listen to your colleagues or keep an ear open for announcements – without removing your headset.

**Wideband audio technology** operates in the extended frequency range of 150–6800 Hz and offers higher quality speech transmission than narrowband. To be able to use wideband, all components of the communication line must support this standard (PPX, mobile network operator etc.).

**Noise-cancellation technology** is incorporated in our microphones to reduce background noise, filter out disturbing ambient noise and enable crystal clear telephone conversations. On certain models in our range we offer ultra-noise cancelling microphones, which are able to improve voice transmission in particularly noisy environments.

## Hearing Protection

**EPOS ActiveGard® hearing protection technology** protects users from the potential danger of acoustic injury from unexpected and sudden sound bursts on the line. EPOS ActiveGard® is like a fast-acting intelligent volume control. If an incoming signal rises to a level that is harmful to your hearing, it is instantly reduced to a lower, and more comfortable level. When the sound level returns to normal, the volume returns to the original level.

## Noise at Work Limiter

**Directive 2003/10/EC** The objective of this Directive is to lay down minimum requirements for the protection of workers from risks to their health and safety arising or likely to arise from exposure to noise and in particular the risk to hearing. The Directive defines the physical parameters that serve as risk predictors, such as peak sound pressure, daily noise exposure level and weekly noise exposure level. It sets exposure limit values and exposure action values in respect to the daily and weekly noise exposure level as well as peak sound pressure. The exposure action value is fixed at 80 decibels (lower value) and 85 decibels (upper value). Source: [www.osha.europa.eu/en/legislation/directives/82](http://www.osha.europa.eu/en/legislation/directives/82)

## Unified Communications

**UC Optimized** means that headsets and speakerphones are compatible with major Unified Communications platforms and softphone brands. Unified Communications brings together a company's voice, text and video based communication under one unified solution. The advantages of a Unified Communications solution include enhanced overall efficiency of a business through increased productivity and mobility, resulting in a positive return on investment.

**Skype for Business Certified** means that products are certified for Skype for Business. Headset and speakerphones have been fully tested to ensure compatibility with Skype for Business and Microsoft® Office 365. You can simply answer or end calls, adjust volume, or mute calls through the headset or speakerphone's call control features.

**Microsoft Teams** Microsoft Teams Certified means that products are certified for Microsoft for Teams. Headset and speakerphones have been fully tested to ensure compatibility with MS Teams.

## Wearing style

**Single-sided** headsets are ideal for situations where you need to both hear your caller clearly, and pay attention to what's going on around you.

**Double-sided** headsets delivers calls in quality sound while reducing background noise – ideal for contact centers, where you need to focus solely on your caller.

## Wireless Technologies

**Bluetooth® technology** is a global radio transmission standard, which supports the application of a wide range of wireless electronic devices. The technology connects devices over a distance of up to 100 meters in line of sight, depending on the Bluetooth® class and device.

### Bluetooth®

Frequency	2.4 GHz
Range	Typical office environment: Up to 25 m/82 ft* Line of sight: Up to 100 m/328 ft
Connectivity	Mobile phone, tablet and/or PC (via dongle)

\*device dependent

# Choose the right headset

You need your device to work seamlessly with your headset. It's that simple. EPOS headsets are designed to cover every possibility.

Check our headset compatibility guide at: [eposaudio.com/compatibility](http://eposaudio.com/compatibility)



## Device/Connectivity



**Softphone/Mobile phone/PC** – Connection via USB/USB-C cable or USB dongle (Bluetooth®) to Microsoft Windows or Apple Mac OS



**Desk phone** – Connection via multiple types of cables



**Mobile phone** – Connection via Bluetooth® or 3.5 mm jack cable



**Tablet** – Connection via Bluetooth®, 3.5 mm jack cable or USB depending on tablet.



**Telecoil** – Works with all standard telecoil-equipped hearing aids.

# THE POWER OF AUDIO

**EPOS**

EPOS Group A/S  
Industriparken 27  
2750 Ballerup, Denmark  
[eposaudio.com](http://eposaudio.com)