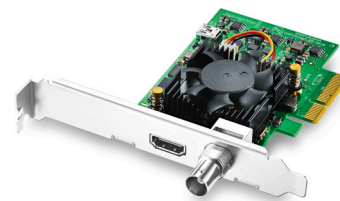


# DeckLink Mini Monitor 4K



**\$195**

DeckLink Mini Monitor 4K is a low profile PCI Express playback card, featuring 6G-SDI and the latest HDMI 2.0a connections so you can monitor all formats up to 2160p30 from your computer! The SDI and HDMI outputs let you connect to any television or monitor and automatically detect and switch between all video formats. You even get high dynamic range playback and metadata over HDMI. You can even develop your own custom playback solutions using the Blackmagic Desktop Video SDK for Mac OS, Windows and Linux! Includes two PCI Express shields for both full height and low profile slots.

## Connections

### SDI Video Outputs

1 x 10 bit SD/HD/Ultra HD switchable.

### SDI Audio Outputs

16 channels embedded in SD, HD, Ultra HD.

### HDMI Video Outputs

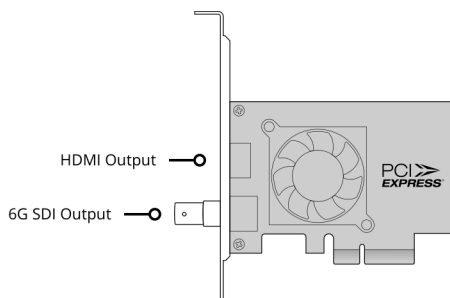
1 x HDMI 2.0a connector.

### HDMI Audio Outputs

8 Channels embedded in SD, HD, Ultra HD.

### Computer Interface

PCI Express 4 lane generation 2, compatible with 4, 8 and 16 lane PCI Express slots.



---

## Supported Codecs

AVC-Intra, AVCHD, Canon XF MPEG2,  
Digital SLR, DV-NTSC, DV-PAL,  
DVCPRO50, DVCPROHD, DPX, HDV,  
XDCAM EX, XDCAM HD, XDCAM  
HD422, DNxHR & DNxHD, Apple  
ProRes 4444, Apple ProRes 422 HQ,  
Apple ProRes 422, Apple ProRes LT,  
Apple ProRes 422 Proxy,  
Uncompressed 8-bit 4:2:2,  
Uncompressed 10-bit 4:2:2.

---

## Software

### Software Included

Media Express, Disk Speed Test,  
LiveKey, Blackmagic Desktop Video  
Utility and Blackmagic driver on Mac  
OS and Windows. Media Express,  
Blackmagic Desktop Video Utility and  
Blackmagic driver on Linux.

### Internal Software Upgrade

Firmware built into software driver.  
Loaded at system start or via updater  
software.

### Physical Installation

PCI Express 4 lane generation 2,  
compatible with 4, 8 and 16 lane PCI  
Express slots on Mac OS, Windows  
and Linux. Mac OS systems require a  
Mac Pro computer with PCI Express  
slots. Please check the Support pages  
to see the full system requirements.

---

## Software Applications



DaVinci Resolve



Adobe Premiere Pro CC



Avid Media Composer



Adobe Photoshop CC

**Other supported applications include:** The Foundry Nuke, Grass Valley Edius, Sony Catalyst Production Suite, Tools On Air Just: Play & Live & In, Softron MovieRecorder & MReplay, Adobe Flash Media Live Encoder, Telestream Wirecast, Livestream Producer, Resolume Arena, Magix Vegas Pro & Movie Edit Pro Premium, Corel VideoStudio Pro, CyberLink PowerDirector, Vidblaster X & Studio & Broadcast, Uniplay One & CG, CasparCG Server, Magicsoft CG, Xsplit Broadcaster, Imagine Communications Velocity & InfoCaster, DevTek Easy Media Suite, Metus Ingest, Boinx Software MimoLive, Cinegy Capture Pro, vMix Live, Renewed Vision ProPresenter, Ventuz Director, Class X Liveboard & Coral CG, Glookast Capturer, Open Broadcaster Software Studio, Nautilus NEMO3D, Burst Video WebClip2Go & [REC]Marker, Autodesk Flame.

---

## Video Standards

### SD Video Standards

525i59.94 NTSC, 625i50 PAL

---

---

**HD Video Standards**

720p50, 720p59.94, 720p60  
1080p23.98, 1080p24, 1080p25,  
1080p29.97, 1080p30, 1080p50,  
1080p59.94, 1080p60  
1080PsF23.98, 1080PsF24,  
1080PsF25, 1080PsF29.97, 1080PsF30  
1080i50, 1080i59.94, 1080i60

**Ultra HD Video Standards**

2160p23.98, 2160p24, 2160p25,  
2160p29.97, 2160p30

**4K DCI Video Standards**

4K DCI 23.98p, 4K DCI 24p,  
4K DCI 25p.

**2K Video Standards (SDI Only)**

2K DCI 23.98p, 2K DCI 24p, 2K DCI  
25p  
2K DCI 23.98PsF, 2K DCI 24PsF, 2K  
DCI F25PsF

**SDI Compliance**

SMPTE 259M, SMPTE 292M, SMPTE  
296M, SMPTE 372M, SMPTE 425M,  
SMPTE 2081, ITU-R BT.656 and ITU-R  
BT.601.

**SDI Metadata Support**

RP 188/SMPTE 12M-2 and closed  
captioning.

**Audio Sampling**

Television standard sample rate of 48  
kHz and 24 bit.

**SDI Color Precision**

8, 10, 12-bit RGB 4:4:4 in all modes up  
to 1080p60, and 8, 10-bit YUV 4:2:2 in  
all modes.

**SDI Video Sampling**

4:4:4 & 4:2:2

**Color Space**

REC 601, REC 709, REC 2020.

**HDMI Video Sampling**

4:4:4, 4:2:2 & 4:2:0

**HDMI Configuration**

HDMI 2.0a supports Deep Color and  
HDR. Automatically configures to  
connected display.

**HDMI Resolution**

Pixel for pixel HD resolution output to  
connected device.

**HDMI Color Precision**

Up to 12-bit (Deep Color)

**Multiple Rate Support**

HDMI and SDI video connections are  
switchable between SD/HD/2K and  
4K.

---

**Processing****HD to SD Down Conversion**

Software based down conversion  
during video playback.

**HD Cross Conversion**

Software based cross conversion  
from 720p to 1080HD on playback.

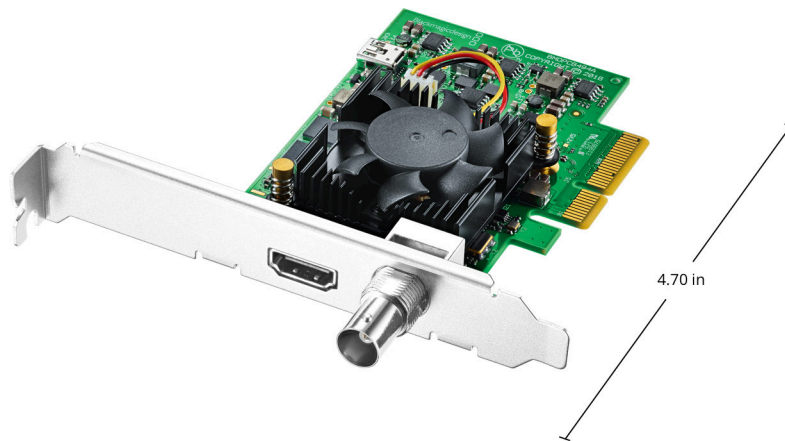
**Colorspace Conversion**

Hardware based real time.

**Real Time Effects**

DaVinci Resolve, Final Cut Pro X  
internal effects. Adobe Premiere Pro  
CC Mercury Playback Engine effects.  
Avid Media Composer internal  
effects.

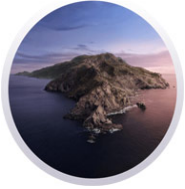
---

**Physical Specifications**

3.17 oz

---

## Operating Systems



Mac 10.14 Mojave,  
Mac 10.15 Catalina or later.



Windows 8.1 and 10, all 64-bit.



Linux

---

## Power Requirements

### Power Consumption

10 Watts

---

## EMC Certifications

FCC, CE and C-Tick.

---

## Environmental Specifications

### Operating Temperature

5° to 40° C (32° to 104° F)

### Storage Temperature

-20° to 45° C (-4° to 113° F)

### Relative Humidity

0% to 90% non-condensing

---

## What's Included

DeckLink Mini Monitor 4K  
Low profile slot bracket  
SD card with software and manual

---

## Warranty

3 Year Limited Manufacturer's Warranty.

All items on this website are copyright Blackmagic Design Pty. Ltd. 2020, all rights reserved.  
All trademarks are property of their respective owners. MSRP includes duties, but excludes sales tax and shipping costs.  
This website uses remarketing services to advertise on third party websites to previous visitors to our site.  
You can opt out at any time by changing cookie settings. [Privacy Policy](#)

Blackmagic Design Authorized Reseller