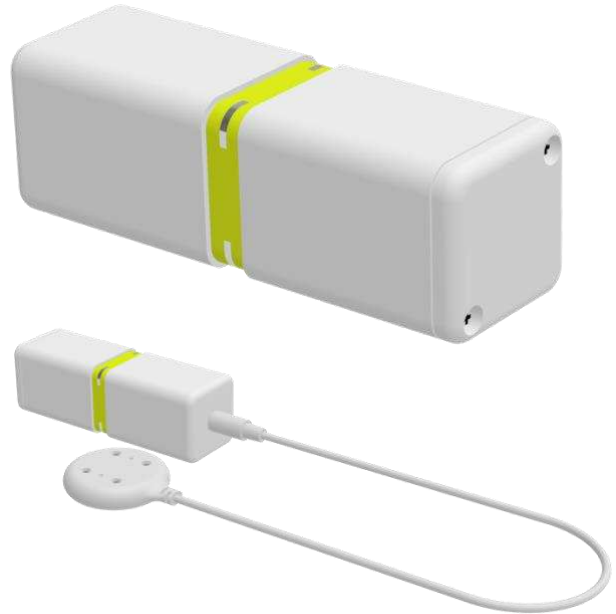


# Water Contact Sensor

The Water Contact Sensor is placed on critical positions within the home and will detect even smallest drops of water thanks to the capillary effect (water is soaked into the colored sensor channel). Detected water results in an alarm sent to a central gateway using LoRaWAN wireless protocol.

The unique feature of this device is the central sensor ring with 4 metal water probes on four corners. This ensures the detection works in all orientation of the device placement.

An external second water detection probe can be connected to the main device and it will act as second sensor differing from the primary probe. The internal temperature sensor will report freezing condition to protect water installation from further damaging

**Simple, Hassle Free Installation**

Fits below dish washer or washing machine, add'l sensor probe

**Built-In Freeze sensor**

Configurable frost warning threshold plus reports local temperature

**7 year battery life**

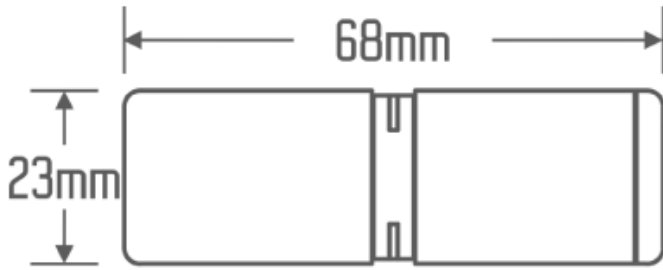
Battery can be replaced with different battery types: ½ AA or ER 14250 or CR 14250

**Outdoor Proof**

IP 67 full water protection, jack for external sensor pad water proof as well



## Dimensions:



## Technical Data:

- SKU: WWDLWE01
- Power Supply. Built-In ER 14250, replaceable
- Sensors:
  - Temperature sensor, 0.1 °C resolution
  - Alarm when temperature below user-defined threshold
  - 4 sensor pins detect even few drops of water due to capillary effect
- Installation:
  - Every position, every angle
  - Additional sensor pad, 140 mm connection cable.
  - Outdoor Use: IP67 (to power supply coupling)
- RF Communication LoRaWAN
  - Radio Chip: SX1261
  - Communication Class: C
  - Frequency: 868...869 MHz
  - Network Adding: OTAA
- Dimensions and Shipment:
  - Weight: 22 gr.
  - Dimension of Packaging 94 x 50 x 27 mm
  - Gross Weight: 58 gr
  - Product per Carton: 24
  - UN Customs Tariff: 90261029000
- Environmental Conditions:
  - Shipment and Storage: -65 °C ... 100 °C
  - Operation: - 30 °C ... 80 °C

