

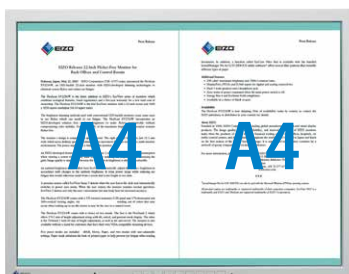


High-Resolution Monitor for Text and Graphics Work

Square Format with Ample Space

With a 21.3-inch screen and a 1600 x 1200 native resolution, the FlexScan S2133 displays a large volume of information so you can scroll less and work more efficiently.

- Displays two A4 pages at once
- Portrait Mode

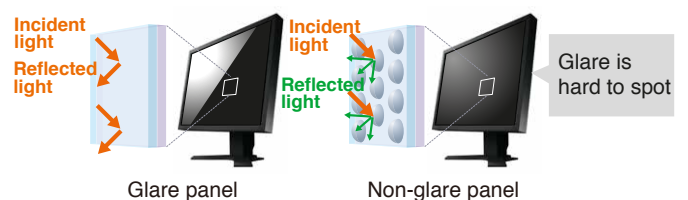


IPS Panel with Wide Viewing Angles

The IPS (in-plane switching) panel offers 178° viewing angles to minimize color shift and contrast when viewing the screen at an angle. This ensures stable and consistent display when two or more people view the screen at once or in a multi-monitor environment.

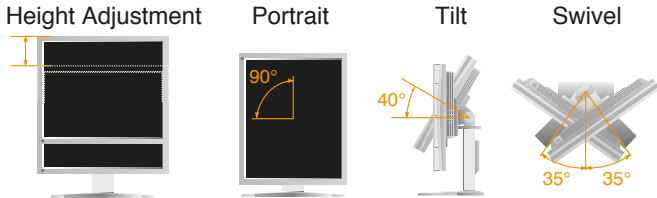


A non-glare screen reduces eye fatigue by dissipating reflective light that otherwise makes the screen difficult to see.



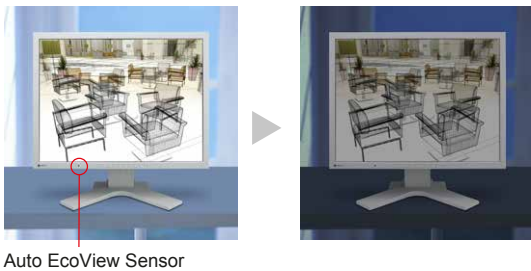
Viewing Comfort with an Ergonomic Stand

Adjust the screen to the most comfortable position with 82 mm height adjustment, 40° tilt, 70° swivel, and 90° rotation for portrait mode. Compatibility with VESA mounting standards allows the monitor to be removed from the stand for mounting on a movable arm or wall bracket.



Optimized Brightness with Auto EcoView

The Auto EcoView ambient brightness sensor on the front of the monitor measures ambient light and optimizes the screen's brightness so the screen is never too bright or too dark. This reduces both eye strain and the monitor's energy consumption.



Auto EcoView Sensor

Preset Modes for Optimum Viewing

For optimum viewing of different kinds of content, EIZO's Fine Contrast function includes modes for office applications (Paper mode), video (Movie mode), web browsing (sRGB mode), and user-defined settings (User modes 1 and 2). Toggling between modes can be done manually in the OSD menu or automatically by assigning a mode to a particular application with the bundled ScreenManager Pro for LCD software.

Closely Simulates Documents and Books

Paper mode produces tones and contrast similar to those of printed paper. Together with the Auto EcoView ambient brightness sensor, Paper mode makes reading documents and ebooks more comfortable and reduces eyestrain. (See sidebar for more information.)



10-Bit Gamma Correction

This technology helps achieve accurate color by converting the 8-bit PC data to 10-bit, and assigning the ideal gamma values with a 10-bit look-up table (LUT) then returning the data to 8-bit format for display.

What is Paper Mode?

Simply put, it is a mode which adjusts the brightness, contrast ratio, and color temperature of a monitor to simulate those of printed paper. Over the course of a work day PC users must constantly adjust to the difference between how monitors and paper appear. This overworks the muscles of the eyes and is thought to be a source of eye fatigue and stress. Paper mode was developed to alleviate the eye fatigue and stress that PC users feel.

Comparison between paper, EIZO square monitors, and Paper Mode

	Newspaper	Recycled Copy Paper	EIZO Square Monitors	Paper Mode
Brightness	55 % reflection rate, 88 cd/m ² *	70 % reflection rate, 112 cd/m ² *	267 cd/m ² †	50 - 70 % reflection rate
Contrast Ratio	6.2:1	10.7:1	1167:1†	About 30:1
Color Temperature	3,477 K	3,828 K	6500 K (when shipped)	4,000 - 5,000 K

* Measured at an ambient brightness of 500 lx. † Average maximum brightness of FlexScan S1903.

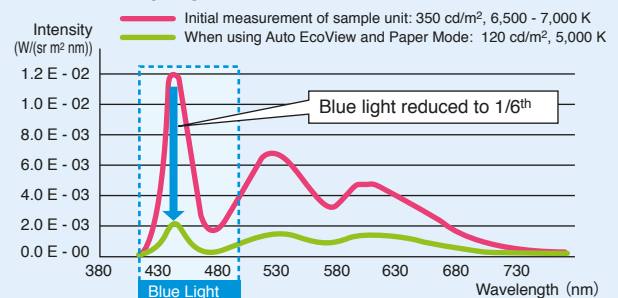
Color Temperature, Brightness and the Effect on Blue Light

In the visible light spectrum, blue light has wavelengths adjacent to ultraviolet light. Compared to the factory preset setting of 6,500 K of typical LCD monitors, Paper Mode is closer to the spectral distribution with long reddish wavelengths so it reduces the amount of blue light, a cause of eye fatigue.



The combination of Paper Mode and the Auto EcoView brightness adjustment function reduces blue light even more. In a monitor with an LED backlight where Paper Mode and Auto EcoView were used, the blue light was measured and found to have only 1/6th the intensity of the factory setting.

Effect of Lowering Brightness and Color Temperature



Consistent Color Display

The gamma, color temperature, and other parameters are adjusted to the proper values on the assembly line. This minimizes variation in color display for consistency in a multi-monitor setups and large scale installations.

Clear Video Display

An overdrive circuit that reduces gray-to-gray response time to just 6 ms when watching video. This greatly reduces ghosting and blurring that is caused by high motion scenes ensuring moving images look clean and sharp.

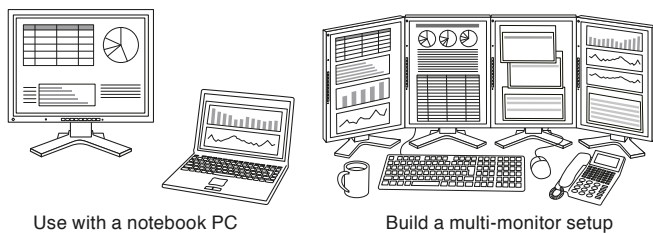
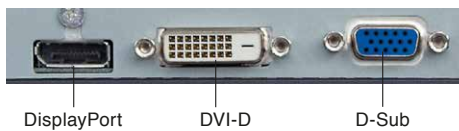


Good Visibility in Bright Places

With a maximum brightness of 420 cd/m² and a contrast ratio of 1500:1, the screen remains visible under daylight conditions and brightly lit rooms.

Getting Connected

Three input terminals are included – DisplayPort, DVI-D, and D-Sub. The DisplayPort cable can be quickly affixed and detached which makes it convenient for connecting the monitor to a notebook computer. With DisplayPort, you can easily build a multi-monitor environment by using a graphics board that has multiple DisplayPort connectors or a Display-Port multi-display adapter.



USB Hub

A USB hub with one upstream and two downstream ports is included.

Supports HDCP

The DisplayPort and DVI-D 24 pin connectors and HDCP compliant. By connecting to an HDCP enabled computer, you can display digital copyright protected contents from digital streams and Blu-ray.

Safety-Lock Slot

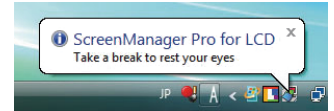
A slot for attaching a safety lock is included to help prevent theft.

LED Backlight

With an energy-saving LED backlight, the FlexScan S2133 uses only 13 watts during typical operation. The LED backlight does not contain any mercury for minimal environmental impact when the monitor is eventually disposed of.

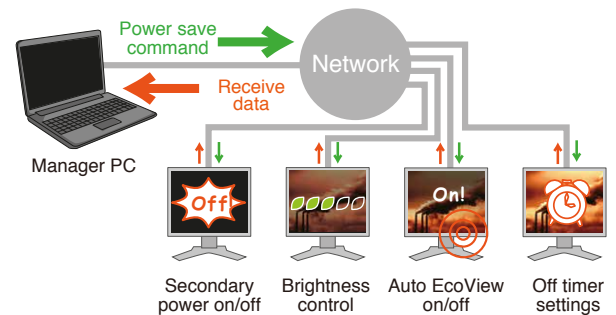
Eye Care Utility

The EyeCare utility is EIZO-developed software that helps promote better work habits. It consists of a function called “EyeCare Reminder” that reminds you to take scheduled breaks.



Energy Savings across the Network

EIZO’s EcoView NET power management software provides centralized control over the power settings of monitors on a network. With EcoView NET, a systems administrator can confirm the settings for each monitor on the network, turn the power on or off, and if necessary, take measures to combat eye fatigue such as adjust the brightness or activate Auto EcoView. EcoView NET is available from EIZO distributors.



Compliance with International Labels



Optional LCD Panel Protector

This protector fits easily between the LCD screen and bezel, has a light transmission rate of more than 90%, and includes both an anti-glare coating side to reduce light reflection and a glossy side for crisper, more vibrant images.



Made by EIZO

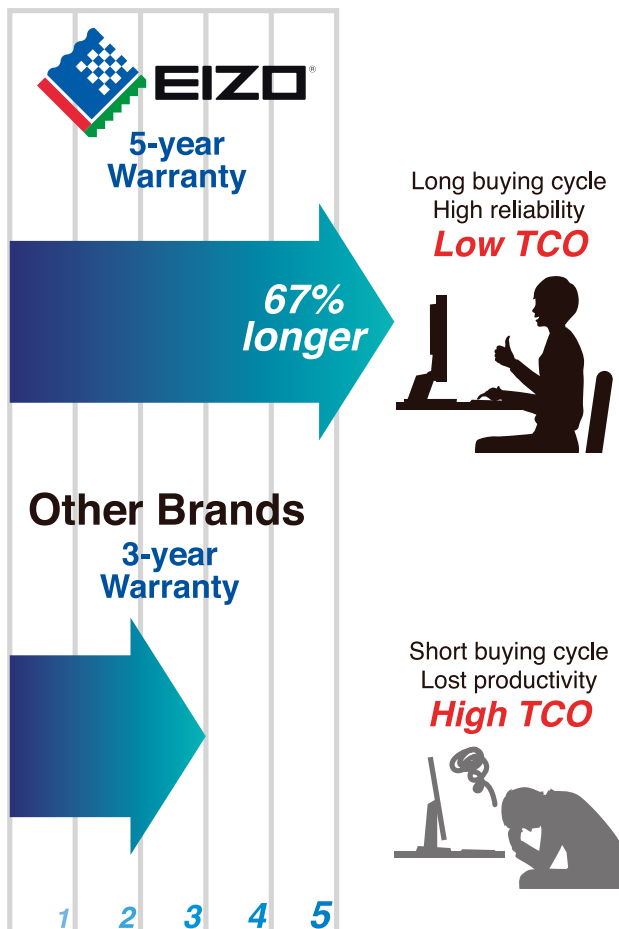
While outsourcing production is now common practice in the monitor industry, EIZO continues to manufacture its products the same way it has throughout its 40-year history – with its own staff at its own factories. This allows EIZO to maintain close control over production quality and offer the industry's only 5-year manufacturer's limited warranty.



Built to Last Five Years

EIZO's five-year warranty is two years or 67% longer than the standard three-year warranty of most brands. Even if the initial purchase price of the FlexScan S2133 is higher than another 21-inch monitor, the TCO (total cost of ownership) will likely be lower due to the significantly longer buying cycle and less need for repair.

5-Year vs. 3-Year Warranty



SPECIFICATIONS

Cabinet Colors	Gray, Black
Panel Type	IPS
Backlight	LED
Size	21.3" / 54 cm (540 mm diagonal)
Native Resolution	1600 x 1200 (4:3 aspect ratio)
Display Size (H x V)	432 x 324 mm
Pixel Pitch	0.270 x 0.270 mm
Display Colors	16.77 million from a palette of 1.06 billion
Viewing Angles (H / V, typical)	178°, 178°
Brightness (typical)	420 cd/m ²
Contrast Ratio (typical)	1500:1
Response Time (typical)	6 ms (Gray-to-gray)
Video Input Terminals	D-Sub mini 15 pin x 1, DVI-D 24 pin x 1 (with HDCP), DisplayPort x 1 (with HDCP)
Digital Scanning Frequency (H / V)	31 - 76 kHz, 59 - 61 Hz (VGA Text: 69 - 71 Hz)
Analog Scanning Frequency (H / V)	24 - 80 kHz, 49 - 76 Hz
Sync Formats	Separate, Composite
USB Function	1 port for monitor control 2-port USB hub
USB Standard	USB 2.0
Power Requirements	AC 100 - 120 V / 200 - 240 V, 50 / 60 Hz
Maximum Power Consumption	45 W
Typical Power Consumption	13 W
Power Save Mode	Less than 0.3 W
Power Management	Power Save (VESA DPM and DVI DMPM), Eco Timer
Preset Modes	FineContrast (User1, User2, sRGB, Paper, Movie)
Auto EcoView	Yes
OSD Languages	English, French, German, Italian, Japanese, Simplified and Traditional Chinese, Spanish, Swedish
Others	Screen Adjustment (Clock, Phase, Position, Range (Auto)), Screen Size (full screen, enlarge, normal), Smoothing (5 stages), Border Intensity, Color Adjustment (Brightness, Contrast, Gamma, Temperature, Saturation, Hue, Gain, Reset), Input Signal, Product Information (name, serial number, resolution, operating time, etc.), OSD Menu Settings, Adjustment Lock, Power Indicator, Reset, DDC/CI Lock
Dimensions (Landscape, W x H x D)	465 x 453 - 535 x 208.5 mm
Dimensions (Without Stand, W x H x D)	465 x 361 x 64 mm
Net Weight	8.6 kg
Net Weight (Without Stand)	5.6 kg
Height Adjustment Range	82 mm
Tilt	40° Up, 0° Down
Swivel	35° Right / 35° Left
Pivot	90°
Hole Spacing (VESA Standard)	100 x 100 mm
Operating Temperature	5 - 35 °C
Operating Humidity (R.H., non condensing)	20 - 80 %
Certifications & Standards	TCO Displays 6.0, EPEAT Gold (US), TUV/Ergonomics (including ISO9241-307), TUV/GS, C-Tick, CE, CB, cTUVus, FCC-B, Canadian ICES-003-B, TUV/S, VCCI-B, EPA Energy Star, RoHS, WEEE, China RoHS, CCC, GOST-R
Supplied Accessories	AC power cord, signal cables (DVI-D - DVI-D, D-Sub mini 15 pin - D-Sub mini 15 pin), USB cable, EIZO LCD Utility Disk (PDF user's manual, ScreenManager Pro for LCD [DDC/CI], EIZO ScreenSlider software)
Warranty	Five Years

EIZO Corporation

153 Shimokashiwano, Hakusan, Ishikawa 924-8566 Japan

Phone +81-76-277-6792 Fax +81-76-277-6793

www.eizo.com

All product names are trademarks or registered trademarks of their respective companies. EIZO and FlexScan are registered trademarks of EIZO Corporation. Specifications are subject to change without notice.

Copyright©2013 EIZO Corporation. All rights reserved.