

RICOH
imagine. change.

RICOH WG-6
RICOH WG-70



New!



Waterproof



Dustproof



Shockproof



Freezeproof

All-weather adventure cameras

WG-6/WG-70

Outdoor performance that suffers harshest situation

Water proof

Shock proof

Dust proof

Freeze proof



New high-end model: the WG-6

Features Only for the WG-6

The light, up to ten times more* with a Ring Light designed for movies and macro photography.

The brightness of the six powerful LEDs around the lens can be adjusted to light the entire subject for movie recording. LEDs can also be selectively turned off, technique that can be enjoyed for added depth in macro mode.



Control brightness or which LED to use



Bright photos of life underwater



Turn few of the LEDs off to add depth in macro mode.

High-performance onboard GPS and electronic compass.

The onboard GPS records the current location with each picture taken for highly accurate, reliable positioning. Photos can be linked to maps or the like, further enhancing the post-photography experience. A compass display shows the heading.

Designed for ease of use even with the gloves on

Upper dial for shooting mode selection, a vertically-oriented zoom button, and plenty of space between the buttons on the back, the camera can be easily operated even with the gloves on.



Monitor display list artist's conception.

Shoot 4K high-resolution movies while keeping shake to a minimum with the new shake-reduction feature. **4K**

Record high-resolution 4K (3840 x 2160 pixel) movies. The camera also features a new Movie SR+* shake-reduction option that can be used to reduce shake and distortion for natural-looking movies.



Image is artist's conception.

Put the date and credits directly on your photos.

Photo credits can now be imprinted on photos in the form of watermarks. Watermarks can be up to 32 characters long and include the date.

*Available only at frame sizes of Full HD and HD. The angle-of-view is reduced by about 50% from the ordinary movie

High image quality in a rugged, all-weather chassis. Extreme gear

WG-6

Approx. 20 effective megapixels | 4K movies



RICOH WG-6 Orange



RICOH WG-6 Black



Common Features of WG-6 / WG-70

5x optical zoom with a 28mm* wide angle coverage for high-resolution images at any scene.

* 35 mm format equivalent.



WG-6



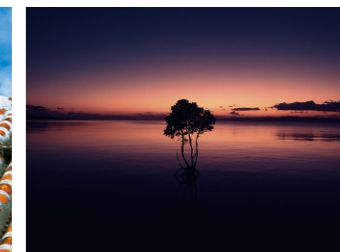
WG-70

Image Tone options popular on PENTAX DSLRs

Choose from a rich selection of image tone options, including Vibrant and Slide Film for results tailored to your subject or personal taste. The WG-70 adds a new Cross Process option. **NEW!**



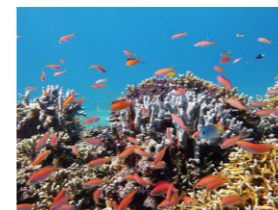
WG-6's Vibrant



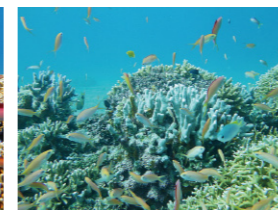
WG-70's Cross Process

Choose Underwater mode for beautiful underwater photos

White balance is optimized to record natural colors during underwater photography. You can also use Underwater Movie mode for beautiful underwater movies.



WG-70's Underwater mode

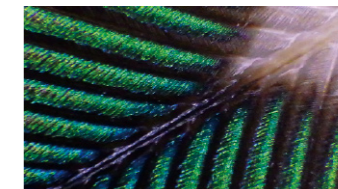


WG-70's Program mode

An easy-to-use Digital Microscope mode

The Digital Microscope mode makes it easy to take impressive macro photographs that capture details that cannot be resolved by the naked eye. Lighting is provided by the six bright LEDs around the lens, so there is no need to worry about the camera's shadow.

In the case of the WG-6, image size is fixed at 3M (4:3), while the WG-70 also offers size of 2M-12M (16:9). **NEW!**



2M photo taken at maximum zoom with the WG 70



WG-70 (with macro stand)

Adjust the monitor visibility with Outdoor View Setting

Quickly adjust monitor brightness by ±2 in response to ambient lighting conditions.



WG-6

Left: Outdoor View +2 Right: Outdoor View OFF (Image is concept art showing an outdoor scene in direct sunlight.)

A full range of shooting options.

A wide selection of shooting modes, face-detection autofocus and auto exposure, digital filters, self-portrait assist, smile capture, and more.

A standard model with a rugged, all-weather chassis

WG-70

New!

Approx. 16 effective megapixels | Full HD movies



RICOH WG-70 Orange



RICOH WG-70 Black

WG-6 Accessories



1. Wide Conversion Lens(0.8x)
DW-5
2. Protector Jacket
O-CC173
3. Soft Case
SC-900
- Rechargeable Battery
DB-110
- BATTERY CHARGER**
BJ-11

WG-70 Accessories



4. A protector jacket that protects the camera from scratches
O-CC1252
5. Camera Case
O-CC118
- Rechargeable Lithium-Ion Battery
D-LI92
- Battery Charger Kit**
K-BC92
This kit consists of Battery charger and AC plug cord.

Accessories



6. Waterproof Remote Control
O-RC1
- A casually styled, padded camera case
O-CC135
- Floating Wrist Strap
O-ST1352
- Sports Strap
O-ST81

WG Mount Accessories (WG-70)



7. WG holder
O-CH1470
8. WG Flat Adhesive Mount
O-CM1471
9. WG Handlebar Mount
O-CM1472

* These accessories may not be usable, or may come off, under certain mounting configurations or conditions. You are advised to observe all safety precautions when using them in your shooting sessions.

Specifications		WG-6	WG-70
Lens		RICOH lens, 11 elements in 9 groups (5 aspherical elements) 5 - 25 mm (approx. 28 - 140 mm in 35mm format equivalent), F3.5 (W) - F5.5 (T) 5x optical zoom, digital zoom, intelligent zoom	
Motion Blur Reduction	Still	Pixel Track SR, Hi-sensitivity anti-shake mode (Digital SR)	
	Movie	Movie shake reduction mode (Movie SR, Movie SR+)	Movie shake reduction mode (Movie SR)
Focus		9-point AF, Spot AF, Auto tracking AF	
AF Type		Standard: 0.5m - infinity (entire zoom range) Macro: 0.1 - 0.6m (entire zoom range) 1cm Macro: 0.01 - 0.3m (middle zoom position) Infinity-landscape, Pan Focus, Manual Focus: available	
Focus range (from lens face)			
Number of Effective Pixels		Approx. 20 megapixels	Approx. 16 megapixels
Image Sensor		1/2.3 inch CMOS	
Movie		4K, 1920, 1280	1920, 1280
Sensitivity (Standard Output Sensitivity)		Auto, Manual (ISO 125 - 6400)	
White Balance		Auto, Daylight, Shade, Cloudy, Tungsten light, Fluorescent light (D:Daylight Color, N:Daylight White, W:White Light), Ring light, Manual	Auto, Daylight, Shade, Tungsten light, Fluorescent light (D:Daylight Color, N:Daylight White, W:White Light), Manual
Display		3.0" Wide LCD, approx. 1040K dots	2.7" Wide LCD, approx. 230K dots

	WG-6	WG-70
Shooting/Playback Modes	Shooting Modes: 24, Playback Modes: 15	Shooting Modes: 25, Playback Modes: 15
Shutter Speed	1/4000 - 1/4sec.(Mechanical and electronic shutter) , 4sec at most. (Night Scene mode setting)	
Storage Media	Built-in Memory, SD/SDHC/SDXC Memory Card, FlashAir card (WG-6 only)	
Power Source	Rechargeable Battery DB-110	Rechargeable Battery D-LI92
Battery Life	Still: Approx. 340 shots*1 Playback: Approx. 260 min.*2 (using the rechargeable battery)	Still: Approx. 300 shots*1 Playback: Approx. 260 min.*2 (using the rechargeable battery)
Interfaces	USB3.0(Type-C), HDMI output terminal(Type D)	USB2.0(Micro-B), HDMI output terminal(Type D)
Waterproof/Dustproof Rating	Equivalent to JIS Class 8 waterproof and JIS Class 6 dustproof capabilities.	
Dimensions*3	Approx.118.2(W) x 65.5(H) x 33.1(D)mm*3	Approx.122.5(W) x 61.5(H) x 29.5(D)mm*3
Weight	Approx. 246g (with battery and SD memory card)	Approx. 193g (with battery and SD memory card)
Accessories	Rechargeable Battery DB-110, USB Power Adapter, Power Plug, USB Cable, Strap, Macro Stand	Rechargeable battery D-LI92, Power Adapter, USB cable, Strap, Macro Stand

*1 Still image capacity *2 The recording time is based on the results of RICOH IMAGING in-house testing. The results may differ depending on the use condition. *3 Excluding operating and protruding parts

About RICOH WG-6 & RICOH WG-70's waterproof, dustproof, and shockproof performance

Waterproof and dustproof performance: • The WG-6 is waterproof to a depth of 20 meters, The WG-70 is waterproof to a depth of 14 meters, and for up to two hours of continuous operation (equivalent to JIS Class 8) and dustproof (equivalent to JIS Class 6). For underwater use, make sure to observe the following instructions and the operating manual to ensure proper operations. •Ensure that the airtight seals installed on the battery/memory card and terminal covers are free of cracks and chips, that foreign substances such as sand and dirt have been wiped away, and are securely locked before use. •Avoid subjecting the camera to excessive shock, such as that created by plunging into water. The waterproof performance may drop. •To maintain the camera's waterproof performance, it is recommended to exchange the waterproof packing once a year. For information concerning waterproof seal exchange, please contact our support center. (a service fee will be charged) **Shockproof performance:** •The WG-6 & the WG-70's shockproof performance was measured using RICOH IMAGING in-house testing standards (against a fall from a height of 2.1 meters / WG-6, against a fall from a height of 1.6 meters / WG-70, onto a surface of 5cm-thick plywood), conforming to Method 516.5-Shock of the MIL-Standard 810F. •The WG-6 & the WG-70's shockproof performance is not guaranteed when the camera experiences excessive shock (such as striking a hard object, or a drop from excessive height). •The WG-6 & the WG-70's shockproof performance does not guarantee that it will remain damage- and trouble-free under all conditions.



•The SDXC logo is a trademark of SD-3C, LLC. •HDMI, the HDMI logo, and High-Definition Multimedia Interface are trademarks or registered trademarks of HDMI Licensing LLC. •This product supports PRINT Image Matching III. PRINT Image Matching-enabled digital still cameras, printers, and software help photographers produce images that are more faithful to their intentions. Some functions are not available on printers that are not PRINT Image Matching III compliant. All copyrights regarding PRINT Image Matching, PRINT Image Matching II, and PRINT Image Matching III are reserved by Seiko Epson Corporation. •All other product/brand/corporate names are trademarks or registered trademarks of their respective companies.

Attention In order to use our products properly and safely, we strongly advise you to carefully and thoroughly read the operating manuals before use.

•Images taken with the RICOH WG-6 & RICOH WG-70's for anything other than personal enjoyment cannot be used without permission, according to the rights as specified in the Copyright Act. Users are advised to take care, as there are cases where limitations are placed on taking pictures even for personal enjoyment during demonstrations, performances or of items on displays. Images taken with the purpose of obtaining copyrights also cannot be used outside the scope of use of the copyright as laid out in the Copyright Act; care also should be taken in this area. •The liquid crystal panel used for the monitor is manufactured using extremely high precision technology. Although the level of functioning pixels is 99.99% or better, you should be aware that 0.01% or fewer of the pixels may not illuminate, or may illuminate when they should not. However, this has no effect on the recorded image. •This product is a Class B information technology device conforming to the standards prescribed by the Voluntary Control Council for Interference by Information Technology Equipment (VCCI) in Japan. Although it is primarily designed and manufactured for use in the household environment, it may cause electromagnetic interference to radio and TV receivers. Users are advised to follow the instructions described in the operating manual. •Users are advised to carry spare batteries for extended shooting sessions. •The sample photos used in this leaflet are conceptual images designed to demonstrate the WG-6 & the WG-70's specific features and functions, and may not have actually been taken with the WG-6 & the WG-70's. •Images appearing in the LCD monitor are simulated. •Due to the properties of the printing process, there may be some discrepancies in color between the actual product and product images appearing in this leaflet. •Designs and specifications are subject to change without notice. •All contents of this leaflet are copyrighted, and must not be used, duplicated or transmitted, whether in part or in entirety, without permission. This leaflet is produced for personal, noncommercial use only, and must not be used for any purpose other than its intended use.