



## **VOXICON WIRELESS PRO MOUSE PLR05WL**

Please read this manual thoroughly before use and keep it handy for future reference.

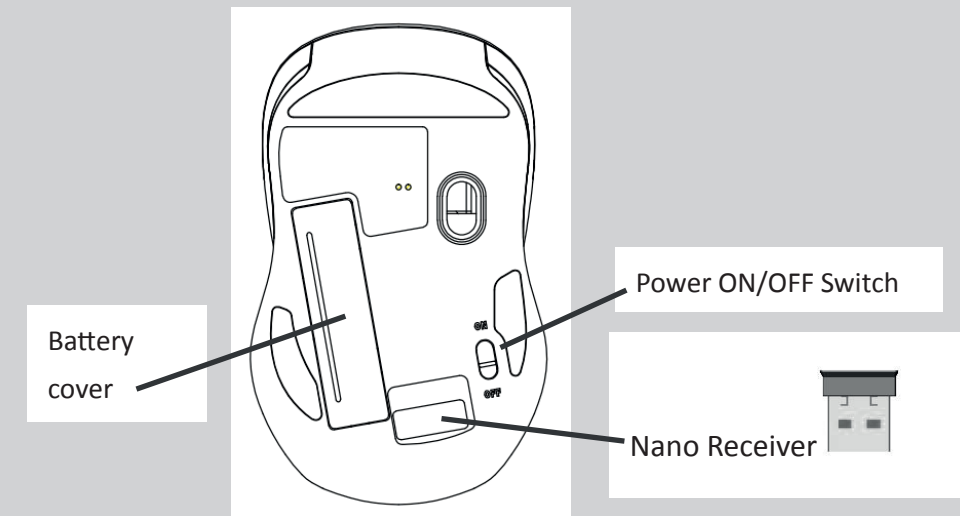
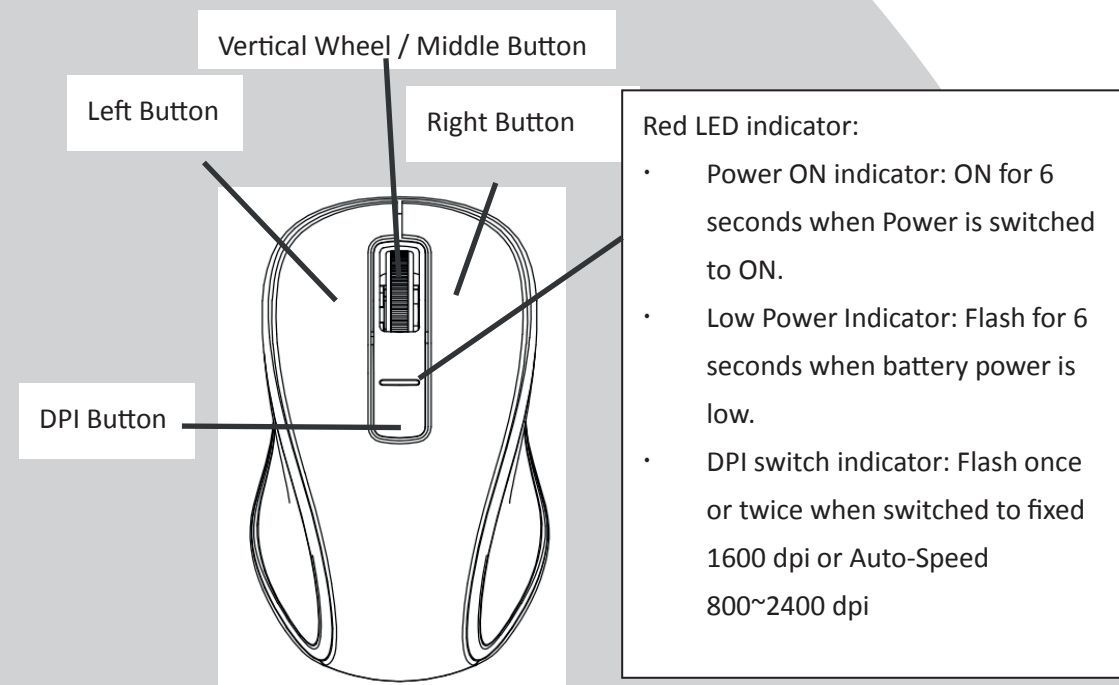
## Introduction

Congratulations on your purchase of the most innovative wireless Auto-Speed mouse. With the Auto-Speed technology, the mouse can automatically lower the DPI and precisely get to your target point when moving slowly or automatically enhance the DPI and more swiftly across a high resolution monitor when moving very fast. It offers even more advance that will make you more productive and more comfortable.

## Product Features

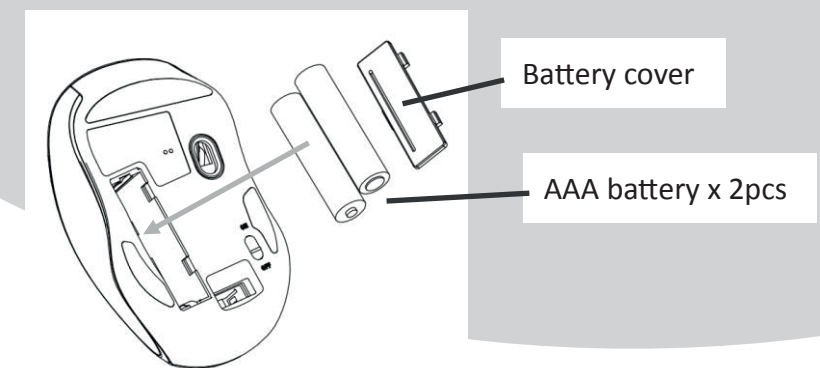
- 2.4GHz (distance 6~8m), 16 Channels
- The state-of-the-art optical technology.
- Vertical Wheel and 4 buttons
- Nano receiver.
- Side rubber for soft grip
- Auto-Link, Plug and Play! No need to set the channel ID. Power on/off switch.
- Auto-Speed 800~2400 dpi / Fixed 1600 dpi Switchable
- Side rubbers for soft grip
- 2\*AAA Alkaline batteries included.
- Mouse Dimension: 99.2 x 61.3 x 39 mm ; Receiver dimension: 17.6 x 15 x 6 mm

## Product Functions



## Operation

1. Insert the batteries
  - a. Lift the battery cover up.
  - b. Insert Alkaline battery AAA x 2pcs. Please ensure the batteries' polarities (+/-) match the battery compartment's polarities.
  - c. Close the battery cover.
  - d. Switch the Power on-off switch on the bottom of the mouse to the ON position.
  - e. The Low Power LED on the top case will be on for 6 seconds when the power is switched on.



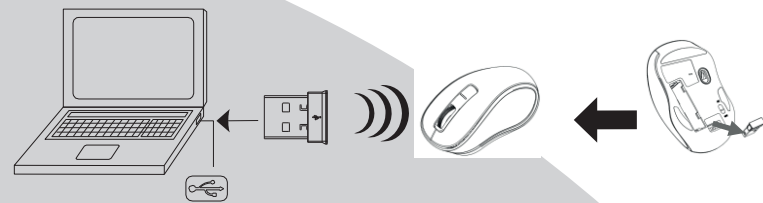
**(!) Note:**

- The unit offers a strong power saving management. Once the mouse accesses the sleeping mode, to slide the mouse can wake it up.

**Power On/Off:**

- To save energy for long period of non-usage, switch the On/Off button to Off position to turn off the mouse.
- Users can press the DPI button to change the resolution. The LED will flash once or twice when dpi has been successfully switched to fixed 1600 dpi or Auto-Speed 800~2400 dpi.

2. Connect the receiver
  - a. Turn on your PC.
  - b. Plug the receiver into the USB port on PC.



3. Communication : the mouse & the receiver
  - a. Make sure the Power On/Off Switch on the bottom of the mouse is ON.
  - b. The mouse and receiver have been successfully linked when the cursor's movement mimics that of the mouse.

**(!) Note:**

- The mouse, while working if encountering any interference, will automatically source out with the receiver and transfer to another free channel. During the transferring, the cursor movement may have a second delay.

**(!) Note:**

- The Red LED on the mouse top is the low battery power indicator. Its 6-seconds flashing indicates that the batteries inside the mouse are needed to be replaced.

## System Requirements

Microsoft Windows 8 /10 or MAC OS X (Button functions may differ on a MAC).

USB Port

## Trouble Shooting

1. Make sure you have put the batteries in correction directions, and power switch is ON.
2. Make sure you have connected the receiver correctly to the computer's USB port.
3. Try another USB port, in case that your USB port is loose.
4. Replace new batteries if needed when the battery power is low.
5. If mouse performance is slow or intermittent around a wireless network, unplug the nano receiver from the USB port and then re-insert it. To reactivate the mouse, switch it on, off and on again using the On/Off switch on the bottom of the mouse.
6. Repeat the connection procedure. You can also try moving the mouse closer to the Nano receiver.
7. Try other working surface which the mouse is operating on.
8. For the best performance, we suggest that you place the receiver away from other electrical devices.

## Battery Use Reminders

1. Remove worn-out batteries from equipment immediately and dispose of them properly.
2. Keep all batteries (used or new) out of the reach of children.
3. Never dispose of batteries in fire.
4. Do not mix old and new batteries. Do not mix alkaline, standard (Carbon-Zinc), or rechargeable (Nickel Cadmium) batteries.
5. Remove the batteries from this device if the device will not be used for a long period of time.
6. If the performance of the battery decreases substantially, it is time to replace the battery.

## FCC Statement

This equipment has been tested and found to comply with the limits for a class B digital device, pursuant to Part 15 of the FCC Rules. These limits are designed to provide reasonable protection against harmful interference in a residential installation.

This equipment generates uses and can radiate radio frequency energy and, if not installed and used in accordance with the instructions, may cause harmful interference to radio communications. However, there is no guarantee that interference will not occur in a particular installation if this equipment does cause harmful interference to radio or television reception, which can be determined by turning the equipment off and on, the user is encouraged to try to correct the interference by one of the following measures:

Reorient or relocate the receiving antenna.

Increase the separation between the equipment and receiver.

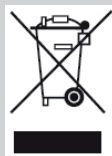
Connect the equipment into an outlet on a circuit different from that to which the receiver is connected.

To assure continued compliance, any changes or modifications not expressly approved by the party responsible for compliance could void the user's authority to operate this equipment.

(Example-use only shielded interface cables when connecting to computer or peripheral devices).

This device complies with Part 15 of the FCC Rules. Operation is subject to the following two conditions:

- 1) This device may not cause harmful interference. And
- 2) This device must accept any interference received, including interference that may cause undesired operation.



This symbol on the product or in the instructions means that your electrical and electronic equipment should be disposed at the end its life separately from your household waste.

There are separate collection system for recycling in the EU.

For more information, please contact the local authority or your retailer where you purchased the product.

## CAUTION:

RISK OF EXPLOSION IF BATTERY IS REPLACED BY INCORRECT TYPE. DISPOSE OF USED BATTERIES ACCORDING TO THE INSTRUCTION.

This product uses non-rechargeable alkaline batteries.

For a smarter way of life.

