

**BISSELL®**



**PET HAIR ERASER®**  
CORDLESS HAND VACUUM

1987 SERIES

# IMPORTANT SAFETY INSTRUCTIONS

## READ ALL INSTRUCTIONS BEFORE USING YOUR APPLIANCE.

When using an electrical appliance, basic precautions should be observed, including the following:



## WARNING

**TO REDUCE THE RISK OF FIRE, ELECTRIC SHOCK, OR INJURY:**

- » This appliance can be used by children aged from 8 years and above and persons with reduced physical, sensory or mental capabilities or lack of experience and knowledge if they have been given supervision or instruction concerning use of the appliance in a safe way and understand the hazards involved. Cleaning and user maintenance shall not be made by children without supervision.
- » Children should be supervised to ensure that they do not play with the appliance.
- » If the charger supply cable is damaged, it must be replaced by the manufacturer, its service agent, or similarly qualified person in order to avoid a hazard.
- » Keep hair, loose clothing, fingers, and all parts of body away from openings and moving parts of the appliance and its accessories.
- » Unplug from electrical socket when not in use and before cleaning, maintaining or servicing the appliance.
- » Do not run appliance over cable.
- » Do not leave appliance when plugged in.
- » Use only as described in this user guide.
- » Use only manufacturer's recommended attachments.
- » Do not use with damaged cable or plug.
- » Do not immerse in water or liquid.
- » If appliance is not working as it should, has been dropped, damaged, left outdoors, or dropped into water; do not attempt to operate it and have it repaired at an authorized service center.
- » Do not pull or carry charger by cable, use cable as a handle, close door on cable, or pull cable around sharp edges or corners.
- » Keep charger cable away from heated surfaces.
- » To unplug, grasp the charger plug, not the cable.
- » Do not handle charger plug or appliance with wet hands.
- » Do not put any object into openings.
- » Do not use with any opening blocked; keep free of dust, lint, hair, and anything that may reduce air flow.
- » Turn off all controls before unplugging.
- » Use extra care when cleaning on stairs.
- » Do not use to pick up flammable or combustible liquids, such as petroleum, or use in areas where they may be present.
- » Do not pick up toxic material (chlorine bleach, ammonia, drain cleaner, etc.)
- » Do not use appliance in an enclosed space filled with vapours given off by oil base paint, paint thinner, some mothproofing substances, flammable dust, or other explosive or toxic vapours.
- » Do not pick up hard or sharp objects such as glass, nails, screws, coins, etc.
- » Keep appliance on a level surface.
- » Do not pick up anything that is burning or smoking, such as cigarettes, matches, or hot ashes.
- » Do not use without dust bag and/or filters in place.
- » Do not use outdoors or on wet surfaces.
- » If your appliance has a motorized brushroll, do not leave machine running in the same spot without the handle fully upright.
- » Battery pack and charger base output terminals are not to be short-circuited.
- » Do not charge the unit outdoors.
- » Do not incinerate the appliance even if it severely damaged. The batteries can explode in a fire.
- » Always turn off this appliance before connecting or disconnecting the motorized nozzle.
- » This appliance contains batteries that are non-replaceable.
- » The appliance must be disconnected from the supply mains when removing the battery.
- » The battery is to be disposed of safely.
- » If your appliance is fitted with a nonrewireable BS 1363 plug it must not be used unless a 13 amp (ASTA approved to BS 1362) fuse is fitted in the carrier contained in the plug. Spares may be obtained from your BISSELL supplier. If for any reason the plug is cut off, it must be disposed of, as it is an electric shock hazard should it be inserted into a 13 amp socket.



## WARNING

**TO REDUCE THE RISK OF ELECTRIC SHOCK - DO NOT USE OUTDOORS OR ON WET SURFACES. RISK OF FIRE OR INJURY TO PERSONS. NO REPLACEMENT PARTS INSIDE. USE ONLY WITH THE CHARGER PROVIDED WITH APPLIANCE.**

# SAVE THESE INSTRUCTIONS

**FOR OPERATION ON A 220-240 VOLT A.C. 50-60 HZ POWER SUPPLY ONLY.**

This model is for household use only.

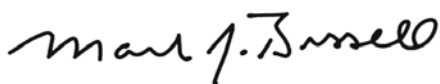
# Thanks for buying a BISSELL vacuum

We're glad you purchased a BISSELL hand vacuum. Everything we know about floor care went into the design and construction of this complete, high-tech home cleaning system.

Your BISSELL hand vacuum is well made, and we back it with a limited one-year warranty. We also stand behind it with a knowledgeable, dedicated Consumer Care department, so, should you ever have a problem, you'll receive fast, considerate assistance.

My great-grandfather invented the floor sweeper in 1876. Today, BISSELL is a global leader in the design, manufacture, and service of high quality homecare products like your BISSELL hard floor cleaner.

Thanks again, from all of us at BISSELL.

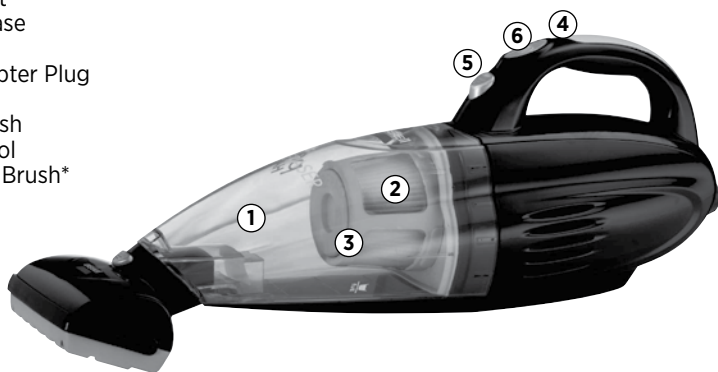


Mark J. Bissell  
Chairman & CEO

Safety Instructions.....	2
Product View.....	4
Assembly .....	5
Operations .....	5-6
Maintenance & Care .....	7-9
Troubleshooting .....	10
Warranty.....	11

# Product View

- 1 Dirt Cup
- 2 Filter
- 3 Washable Filter Cup
- 4 Charging Light
- 5 Dirt Cup Release
- 6 Power Button
- 7 Charging Adapter Plug
- 8 Crevice Tool
- 9 Motorized brush
- 10 Upholstery Tool
- 11 2-in-1 Dusting Brush\*



\*varies by model

## **WARNING**

Plastic film can be dangerous. To avoid danger of suffocation, keep away from babies and children.

## **WARNING**

Do not plug in your hard floor cleaner until you are familiar with all instructions and operating procedures.

## **WARNING**

To reduce the risk of electric shock, turn power switch off and disconnect plug from electrical outlet before performing maintenance or troubleshooting checks.

# Assembly

Your hand vacuum comes fully assembled.

**WARNING**  
Do not plug in your hand vacuum until you are familiar with all instructions and operating procedures.

## Charging

**\*\*\*IMPORTANT\*\*\* ALWAYS TURN UNIT OFF PRIOR TO CHARGING\***

\*failing to do so may result in battery not fully charging

1. Insert charging adapter plug into the charging port on the back of the unit.
2. Plug the adapter into the wall outlet. The power LED lights will illuminate when charging. Charge the unit completely for 5 hours prior to first use.

**NOTE: The charge light will turn RED during charging and turn OFF once it is fully charged. The adaptor may become warm during charging - this is normal.**

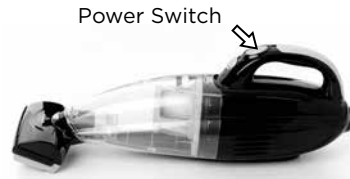
3. When the unit is fully discharged, approximately 5 hours of charging time is required for the battery to regain full capacity.



# Operations

## Using your hand vacuum

1. Unplug the machine from the charging adapter.
2. The power button is located on the top of the handle.
3. Push power button ON.



## Using the motorized brush

1. To attach the motorized brush, make sure the unit is in the OFF position.
2. Firmly insert the motorized brush into the nozzle of the hand vac until it snaps into place.
3. To detach, press the button on top of the motorized brush and pull out.
4. The motorized brush can be used to vacuum stairs, upholstery and other hard to reach areas.

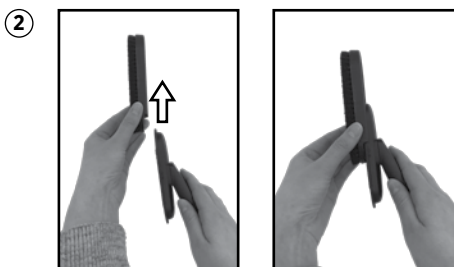
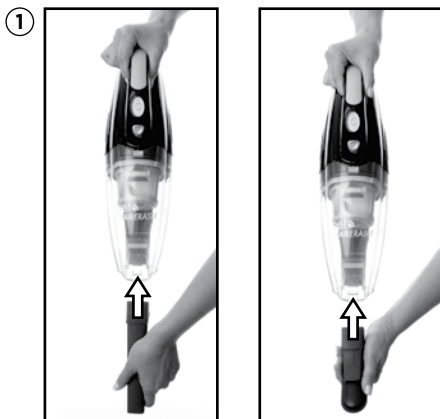


# Operations

## Using hand vacuum accessories

1. To use hand vacuum accessories, remove the motorized brush as directed in "Using the motorized brush" section on page 5, and then insert the end of the tool into the end of the hand vacuum prior to turning hand vacuum ON.
2. If your hand vacuum came with the 2-in-1 dusting brush, simply slide the dusting brush tool on top of the upholstery tool until you hear a click.
3. Accessories can be combined together or used individually based on your cleaning needs.

**NOTE: The upholstery tool can be rotated either clockwise or counterclockwise for cleaning convenience.**



# Maintenance & Care

To maintain maximum cleaning performance, the following maintenance steps must be performed:

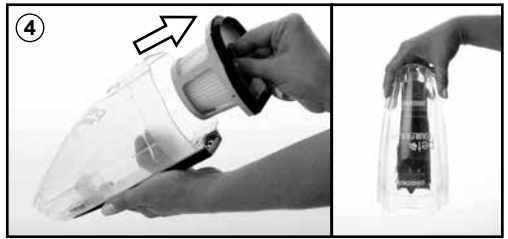
## Emptying the dirt cup

Dirt cup should be emptied before debris reaches the FULL line on cup.

1. Turn power OFF.
2. Push Release Button.
3. Hold the hand vacuum vertically and depress release button on the front to release dirt cup.
4. Grasp filter tabs and pull vertically to remove filter cup and empty dirt into waste container.
5. Replace filter back into the dirt cup and attach dirt cup to hand vacuum until it snaps securely into place.

## WARNING

To reduce the risk of electric shock, turn power switch off and disconnect plug from electrical outlet before performing maintenance or troubleshooting checks.



## Cleaning or replacing the filter

The key to maximum performance is having a clean filter. Cleaning the filter after each use will help your vacuum operate at peak efficiency.

Use only genuine BISSELL replacement filters in your BISSELL hand vacuum.

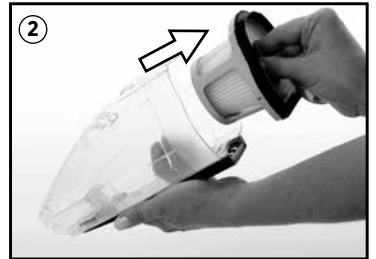
### To clean filter:

1. Turn power OFF.
2. Remove the dirt cup as directed in "Emptying the dirt cup" in previous section.
- 3a. To remove filter cup from the dirt cup, grasp filter tabs and lift up to remove the washable filter cup from the dirt cup. Grip the filter cup and turn counterclockwise and lift down to remove filter from filter cup.
- b. Tap firmly against the inside of a waste container, removing any visible dirt.
4. Replace filter back into the filter cup then turn clockwise to lock into place.
5. Attach filter cup back into the dirt cup and attach to hand vacuum until it snaps securely in place.

**NOTE: After heavy usage, you may clean the filter and filter cup by washing it gently by hand in warm water and mild dish detergent. Rinse thoroughly and make certain it is completely dry before replacing it.**

## WARNING

Do not operate appliance with damp or wet filters or without all filters in place.



# Maintenance & Care

## Nozzle and Motorized Brush Maintenance

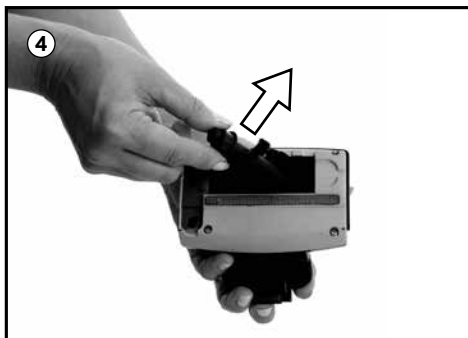
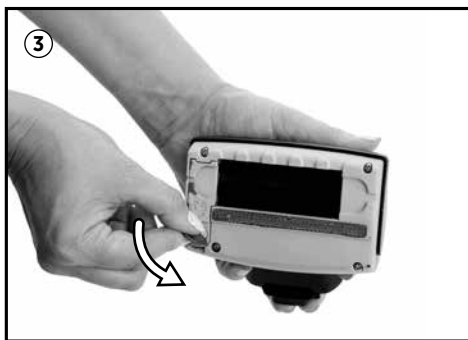
Keep nozzle clean and free of debris by wiping with clean, damp cloth.

## Brush Roll Maintenance

The brush roll may accumulate debris such as strings, hair and fibers. This type of debris can wrap around the brush and diminish its ability to clean effectively.

### To remove brush roll for cleaning:

1. Turn power OFF.
2. Detach motorized brush if attached OR turn unit over to access the brush roll.
3. To remove brush roll, use a coin to turn counterclockwise to unlock the brush roll.
4. Then simply lift the brush out of the foot and clean off hair or other debris from brush roll.
5. Place the cleaned brush roll back into the foot of unit and use coin to turn lock clockwise to lock into place.





# Maintenance & Care

## Disposal of batteries

If your Pet Hair Eraser® Cordless Hand Vacuum is to be disposed of, the batteries should be removed and disposed of properly.

- 1. IMPORTANT:** Unplug charger.
2. Remove dirt cup from handle.
3. Remove (8) Phillips head screws and remove the lens from the hand vacuum.
4. Lift off the hand vacuum cover.
5. Remove the entire battery assembly from the cover.
6. Cut wires from the PCB and wrap the wire ends with insulation tape.
7. Keep Battery Pack together – DO NOT separate individual batteries. For specific disposal instructions of batteries, please contact your local battery recycling facility.
8. Discard remainder of product



8 screws

**CAUTION: Disconnecting the battery will destroy the appliance and void the warranty.**



## WARNING

This product contains Nickel Metal Hydride (Ni-MH) rechargeable batteries. According to government regulations, removal and proper disposal of Ni-MH batteries is required. For removal of the batteries in your Pet Hair Eraser® Cordless Hand Vacuum see instructions on this page.

# EN Troubleshooting

## **WARNING**

To reduce the risk of electric shock, turn power switch off and disconnect plug from electrical outlet before performing maintenance or troubleshooting checks.

<b>Problem</b>	<b>Possible causes</b>	<b>Remedies</b>
<b>Vacuum won't turn on</b>	Battery is fully discharged	Charge battery. Follow charging battery instructions on page 5
<b>Vacuum cleaner has low suction</b>	Dirt container is full	Empty dirt container
	Dirt container is not installed properly	Position container correctly and snap firmly into place
	Filters need cleaning	Follow filter instructions on page 7
	Filters need replacing	Visit <a href="http://www.bissell.com">www.bissell.com</a> or call 1-800-237-7691 to order replacement filters
	Battery needs charging	Charge battery. Follow charging battery instructions on page 5
<b>Visible dirt escaping from vacuum</b>	Dirt container is full of debris	Empty dirt container
	Filter is missing or installed incorrectly	Check filter for correct installation
<b>Hand vacuum won't charge</b>	Machine is in the ON position	Set the hand vacuum in the OFF position
	Not the correct charger	Use only the charger that comes with the machine

**Please do not return this product to the store.**

Other maintenance or service not included in the manual should be performed by an authorized service representative.

Thank you for selecting a BISSELL product.

**For any questions or concerns, BISSELL is happy to be of service.**

# Consumer Guarantee

This Guarantee only applies outside of the USA and Canada. It is provided by BISSELL International Trading Company BV ("BISSELL").

This Guarantee is provided by BISSELL. It gives you specific rights. It is offered as an additional benefit to your rights under law. You also have other rights under law which may vary from country to country. You can find out about your legal rights and remedies by contacting your local consumer advice service. Nothing in this Guarantee will replace or lessen any of your legal rights or remedies. If you need additional instruction regarding this Guarantee or have questions regarding what it may cover, please contact BISSELL Consumer Care or contact your local distributor.

This Guarantee is given to the original purchaser of the product from new and is not transferable. You must be able to evidence the date of purchase in order to claim under this Guarantee.

## Limited 2 Year Guarantee from the date of purchase by original purchaser

Subject to the \*EXCEPTIONS AND EXCLUSIONS identified below, BISSELL will repair or replace (with new or remanufactured components or products), at BISSELL's option, free of charge, any defective or malfunctioning part or product.

BISSELL recommends that the original packaging and evidence of the date of purchase be kept for the duration of the Guarantee period in case the need arises within the period to claim on the Guarantee. Keeping the original packaging will assist with any necessary re-packaging and transportation but is not a condition of the Guarantee.

If for your product is replaced by BISSELL under this Guarantee, the new item will benefit from the remainder of the term of this Guarantee (calculated from the date of the original purchase). The period of this Guarantee shall not be extended whether or not your product is repaired or replaced.

### \*EXCEPTIONS AND EXCLUSIONS FROM THE TERMS OF THE GUARANTEE

This Guarantee applies to products used for personal domestic use and not commercial or hire purposes. Consumable components such as filters, belts and mop pads, which must be replaced or serviced by the user from time to time, are not covered by this Guarantee.

This Guarantee does not apply to any defect arising from fair wear and tear. Damage or malfunction caused by the user or any third party whether as a result of accident, negligence, abuse, neglect, or any other use not in accordance with the User Guide is not covered by this Guarantee.

An unauthorised repair (or attempted repair) may void this Guarantee whether or not damage has been caused by that repair/attempt.

Removing or tampering with the Product Rating Label on the product or rendering it illegible will void this Guarantee.

SAVE AS SET OUT BELOW BISSELL AND ITS DISTRIBUTORS ARE NOT LIABLE FOR ANY LOSS OR DAMAGE THAT IS NOT FORESEEABLE OR FOR INCIDENTAL OR CONSEQUENTIAL DAMAGES OF ANY NATURE ASSOCIATED WITH THE USE OF THIS PRODUCT INCLUDING WITHOUT LIMITATION LOSS OF PROFIT, LOSS OF BUSINESS, BUSINESS INTERRUPTION, LOSS OF OPPORTUNITY, DISTRESS, INCONVENIENCE OR DISAPPOINTMENT. SAVE AS SET OUT BELOW BISSELL'S LIABILITY WILL NOT EXCEED THE PURCHASE PRICE OF THE PRODUCT.

BISSELL DOES NOT EXCLUDE OR LIMIT IN ANY WAY ITS LIABILITY FOR (A) DEATH OR PERSONAL INJURY CAUSED BY OUR NEGLIGENCE OR THE NEGLIGENCE OF OUR EMPLOYEES, AGENTS OR SUBCONTRACTORS; (B) FRAUD OR FRAUDULENT MISREPRESENTATION; (C) OR FOR ANY OTHER MATTER WHICH CANNOT BE EXCLUDED OR LIMITED UNDER LAW.

## Consumer Care

If your BISSELL product should require service or to claim under our limited guarantee, please contact us as follows:

### Website:

[www.BISSELL.eu](http://www.BISSELL.eu)

### Email:

[Customers.Bitco@bissell.com](mailto:Customers.Bitco@bissell.com)

### Write:

BISSELL International Trading Company B.V.  
Stadhouderskade 55  
1072 AB Amsterdam  
The Netherlands

## Visit the BISSELL website: [www.BISSELL.eu](http://www.BISSELL.eu)

When contacting BISSELL, have model number of cleaner available.

Please record your Model Number: \_\_\_\_\_ Please record your Purchase Date: \_\_\_\_\_

**NOTE: Please keep your original sales receipt. It provides proof of the date of purchase in the event of a Guarantee claim. See Guarantee for details.**



©2017 BISSELL Homecare, Inc  
Grand Rapids, Michigan  
All rights reserved. Printed in China  
Part Number 16I-0763 02/17  
Visit our website at: [www.BISSELL.eu](http://www.BISSELL.eu)