

# PA300

Single-band Access Point  
 100% outdoor ready  
 Cloud managed



## PA300



**2.4 GHz 802.11n WiFi**

### SINGLE-BAND ACCESS POINT

Plasma Cloud's low cost solution providing single band dual stream 2.4GHz 802.11n WiFi in a weather resistant housing. Your best choice if the budget is a concern or for large WiFi sensor deployments.



**Zero Config Plug-n-Play**

### POWER OVER ETHERNET (PoE)

Power over Ethernet (PoE) allows to supply a device with power and data over a single Ethernet cable connection. This reduces installation cost and effort for locations without available power lines. Furthermore, when connected to a Plasma Cloud PoE switch, PoE allows to centrally manage & monitor the power supply.



**Free cloud-based web console for complete management**

### ETHERNET PORTS

The 2 provided Ethernet ports allow for maximum flexibility: one port can be used as wired uplink while the other port serves as LAN access for other wired devices. Each Ethernet port comes with a smart uplink detection to automatically determining whether a port should be uplink or provide LAN access.



**Water and dust resistant with an IP55 rating**

### MOUNTING OPTIONS

Regardless where to place the access points – on a wall, ceiling grid, pole, outdoors – the installer kit included with every AccessPoint facilitates the installation. Easily pluggable mounting options got you covered for every scenario.

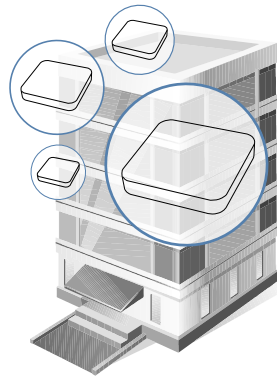


**Universal installation kit included**

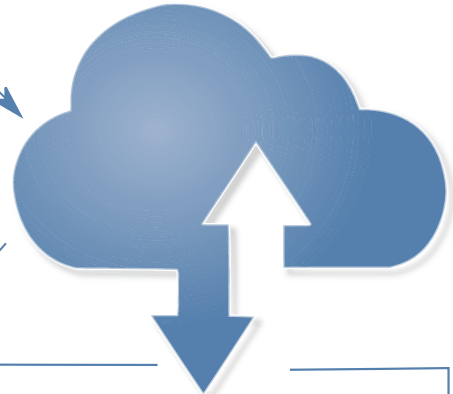
# NETWORK AS A SERVICE (NaaS)

## HIGHLIGHTS:

- Access Control
- Presence Data
- Guest WiFi
- Advertising
- Proximity Marketing
- VPN

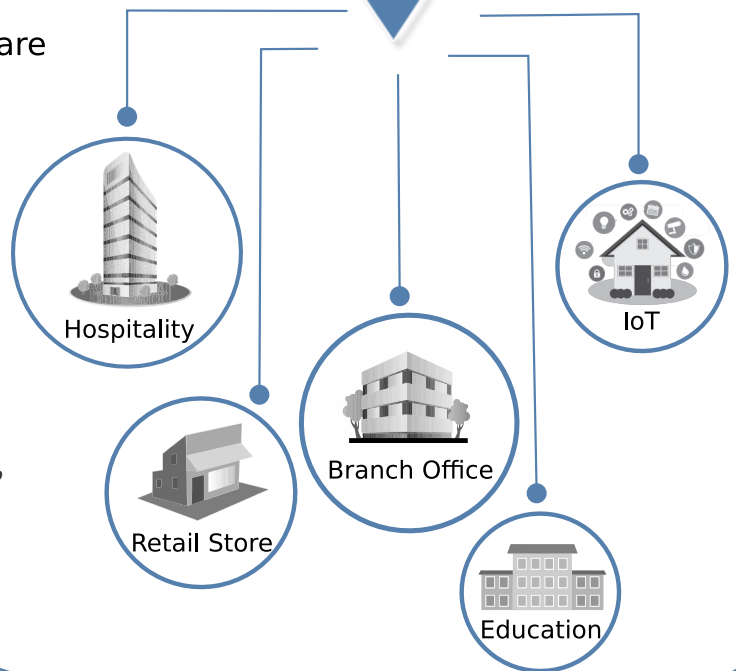


On Premise Hardware



## CLOUD KEY FEATURES:

- Zero touch deployment
- Automated monitoring and alerting
- Manage and troubleshoot from anywhere, anytime



## INDUSTRY LEADING SOFTWARE AND PRODUCTS



### Affordable Network Solution

Plasma Cloud offers an affordable turnkey solution to cover all needs in and around your network. WiFi Access Points and Switches in various sizes to fit your needs & budget bundled with free & powerful cloud management.



### Best In-Class Cloud

Plasma Cloud's technology team has built the fastest and most scalable network management cloud system. Our experts have put in their combined experience to develop a truly unique product that will impress you in many ways.



### Simplicity is Key

Plasma Cloud is designed for the needs of those tired of endless manual tweaking and cumbersome monitoring. Our smart software is designed to minimize setup effort to the essential and get you started in no time!

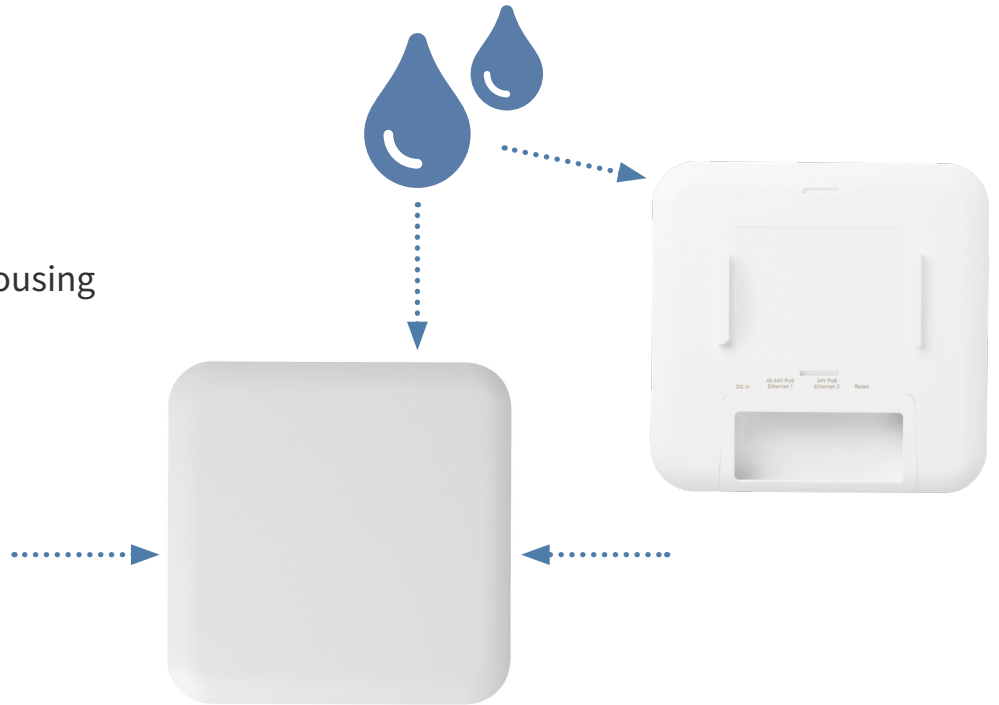



### White-Label Dashboard


Our dashboard is the reference web interface. It is designed to be highly customizable, both for branding and adaptation purposes as well as for the end-user.


# HOUSING

- IP55 Certified Outdoor Housing
- Water Resistance



 Operating temperature: 0 °C ~ 40 °C

 Operating humidity: 0% ~ 90% typical

 Storage temperature: -30 °C ~ 80 °C

Water resistant design with sealed top and bottom enclosures and water resistant cable bay allows versatile installation environment including shaded garden, under eaves, outdoor shed, or veranda.

# MOUNTING OPTIONS

Wall Mount



Pole Mount



T-rail Mount



Junction Plate



# TECHNICAL SPECIFICATIONS

<b>Radio Chains / Streams</b>	2.4 GHz : 2x2
<b>Antennas</b>	2.4 GHz : 3.0 dBi
<b>Data Rates</b>	300 Mbps
<b>2.4 GHz</b>	2 stream, 802.11 b/g/n (max rate : 300 Mbps)
<b>Processor</b>	Qualcomm Honeybee QCA9531
<b>Memory</b>	64 MB
<b>Physical Interface</b>	2x 100 Mbps Ethernet ports
<b>PoE</b>	24V passive PoE 802.3af / 802.3at
<b>DC Jack</b>	12-24V / 1A
<b>Power Consumption</b>	Min : 3W Max : 9W
<b>Indoor / Outdoor Rating</b>	CE marked for indoor / outdoor use, IP55
<b>Dimension (W x D x H)</b>	142 x 142 x 34 mm
<b>Weight</b>	470 g
<b>Operating Temperature</b>	0 °C ~ 40 °C (32 °F ~ 104 °F)
<b>Certifications</b>	CE, FCC, IC, RCM
<b>Zero Config Plug-n-Play</b>	Yes
<b>Wireless Mesh Network</b>	Yes
<b>Free Cloud Console</b>	Yes
<b>Free Mobile App</b>	Yes

# RADIO 1, 2.4 GHz:

RF PERFORMANCE TABLE

Operating Mode	Data Rate	TX Power	RX Sensitivity
802.11b	1 Mbps	26 dBm	-85 dBm
	2 Mbps	26 dBm	
	5.5 Mbps	26 dBm	
	11 Mbps	26 dBm	-82 dBm
802.11g	6 Mbps	26 dBm	-85 dBm
	9 Mbps	26 dBm	
	12 Mbps	26 dBm	
	18 Mbps	26 dBm	
	24 Mbps	26 dBm	
	36 Mbps	26 dBm	
	48 Mbps	26 dBm	
	54 Mbps	24 dBm	-70 dBm
802.11n (HT20)	MCS0	26 dBm	-85 dBm
	MCS1	26 dBm	
	MCS2	26 dBm	
	MCS3	26 dBm	
	MCS4	25 dBm	
	MCS5	25 dBm	
	MCS6	25 dBm	
	MCS7	24 dBm	-68 dBm
802.11n (HT40)	MCS0	26 dBm	-82 dBm
	MCS1	26 dBm	
	MCS2	26 dBm	
	MCS3	26 dBm	
	MCS4	25 dBm	
	MCS5	25 dBm	
	MCS6	25 dBm	
	MCS7	24 dBm	-65 dBm

# RADIATION PATTERNS

