

GARMIN




ZUMO®
395LM / 595LM



GPS MOTORCYCLE NAVIGATORS
BUILT TO THRILL

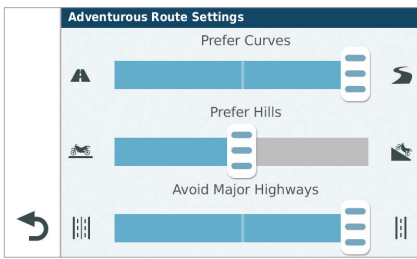
Get ready for adventure with Garmin zūmo® navigators.

Tough enough for your bike and packed with capabilities that add excitement and awareness to your next ride. Let zūmo do the planning, thinking and navigation, while you spend more time doing what you love: **Enjoying the thrill.**

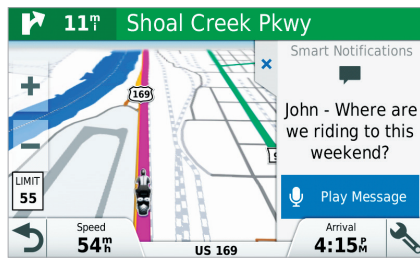


zūmo 395LM

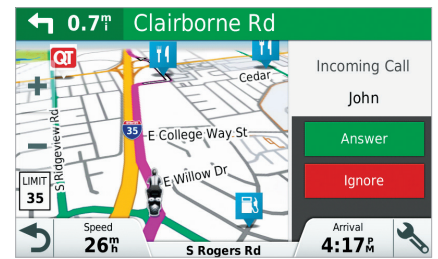
zūmo 595LM



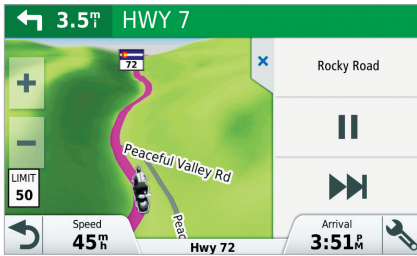
Garmin Adventurous Routing™ lets you adjust your route preferences to avoid highways and select your level of twists and hills.



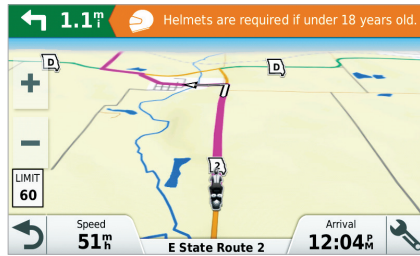
Receive smartphone notifications, including text messages, calendar reminders and app alerts, right on the zūmo display with the Smartphone Link app.⁴



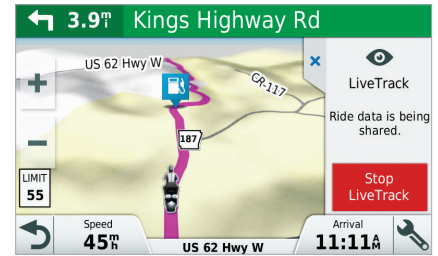
Make and receive calls, and hear turn-by-turn directions, using a Bluetooth® compatible helmet/headset (sold separately).²



Play music and media from your compatible MP3 player; the 595 model even allows you to stream music⁶ from Pandora® and Spotify®.



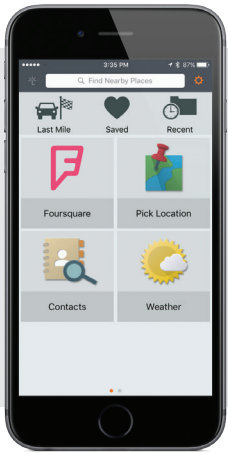
See rider alerts for sharp curves, helmet laws, speed cameras³, and more.



Through the Smartphone Link app⁴, LiveTrack lets your friends track your location on your current ride.

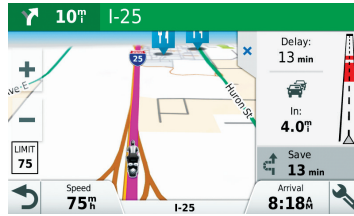
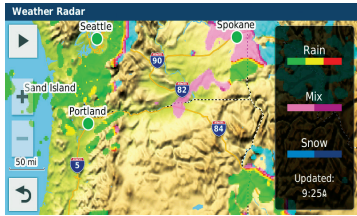


Point and go with glove-friendly, sunlight-readable touchscreen displays. zūmo's rugged, ready-to-ride design withstands fuel vapors, UV rays, rain and harsh weather (IPX7 rating).



Premium real-time services with Smartphone Link

The Garmin Smartphone Link app allows you to connect your zūmo 595LM with a compatible smartphone. Once linked, the navigator uses your existing mobile data plan⁴ to share information, including contacts, search results, favorite locations, your driving destination, and more. With Smartphone Link, your navigator can also access Garmin Live Services⁴ for premium real-time services, including live weather radar, live traffic, and more (subscription may be required).



Record and Relive the Adventure

You can use the zūmo touchscreen to wirelessly control Garmin VIRB[®] action cameras (sold separately). Easily stop and start recording—or even capture snapshots—without removing the camera from its mount.



Tire Pressure Information at a Glance

Easily monitor your motorcycle's tire pressure⁵ from your zūmo display. Tire Pressure Monitoring Sensors (TPMS) let you set custom pressure thresholds. If tire pressure changes, TPMS issues an alert. TPMS measures tire pressure trends over time, so it's possible to detect a slow leak before it becomes a bigger problem (sold separately).



zūmo

	395LM	595LM
Display Size	4.3"	5.0"
Dual-orientation display		•
3D Terrain		•
Smartphone Notifications ⁴		•
Live Services ⁴ (ex. live weather & traffic)		•
LiveTrack ⁴		•
Built-in Spotify & Pandora music services		•
MP3 Player/Music Control	•	•
Junction Views	Simple Junction View	photoReal & Bird's Eye Junction Views
Lane guidance arrows	Lane Assist	Active Lane Guidance with voice prompts
Garmin Adventurous Routing™	•	•
Rider Alerts	•	•
Helmet Law Notifications (US/CAN)	•	•
Elevation Profile	•	•
Easy Route Shaping	•	•
Planned & Dynamic Fuel Stops	•	•
Roundtrip routing	•	•
Bluetooth [®] hands-free calling	•	•
Motorcycle-specific POIs	•	•
Free Lifetime Map updates ¹	•	•
Service History Log	•	•
Garmin Real Directions™ landmark guidance	•	•
Foursquare [®] (database of millions of new & popular POIs)	•	•
Includes automotive mount	•	•
Compatible with Tire Pressure Monitor System	•	•
Compatible with VIRB action cameras	•	•



¹ Lifetime Maps entitle you to receive map updates when and as such updates are made available by Garmin during the useful life of 1 compatible Garmin product or as long as Garmin receives map data from a third party supplier, whichever is shorter. For the meaning of a product's "useful life" and for other important terms and conditions, please see Garmin.com/LM.

² Requires Bluetooth-compatible helmet, headset or smartphone; sold separately.

³ Red light and speed camera warnings are not available in all regions.

⁴ Features available via download of the Smartphone Link app. User's data plan charges, if any, will apply. Subscription may be required.

⁵ Sensor works with metal valve stems only.

⁶ Music and Media control work with iPhone[®] 3GS or later, and some iPod[®] devices. Pandora[®] works with iPhone 4 or later and some Android[™] devices. Pandora is currently available in the United States, Australia and New Zealand. Spotify compatible mobile digital device and premium subscription required, where available, see Garmin.com.

⁷ See Garmin.com/waterrating.

The Bluetooth[®] word mark and logos are registered trademarks owned by Bluetooth SIG, Inc. and any use of such marks by Garmin is under license. Foursquare[®] is a registered trademark of Foursquare Labs, Inc. Pandora, the Pandora logo, and the Pandora trade dress are trademarks or registered trademarks of Pandora Media, Inc. SPOTIFY and the Spotify logo are among the registered trademarks of Spotify AB.

For more information,
visit Garmin.com/zumo

