

Lenovo USB-C Laptop Power Bank

User Guide

Contents

Safety information	1
About the power bank	1
Parts and locations	2
Charge the power bank	3
Charge your computer	3
Charge your mobile device	4
Charge your computer, mobile devices, and power bank	5
Indicators	5
Troubleshooting	5
Specifications	6
Accessibility information	6

Safety information



Batteries supplied by Lenovo® for use with your product have been tested for compatibility and should only be replaced with approved parts. Except for the battery specified by Lenovo, a disassembled or modified battery is not covered by the warranty.

To avoid possible injury, do the following:

- Do not open, disassemble, or service any battery.
- Do not crush or puncture the battery.
- Do not short-circuit the battery, or expose it to water or other liquids.
- Keep the battery away from children.
- Keep the battery away from fire.
- Stop using the battery if it is damaged, or if you notice any discharge or the buildup of foreign materials on the battery leads.
- Do not put the battery in trash that is disposed of in landfills. When disposing of the battery, comply with local laws or regulations.
- Do not attempt to replace the internal rechargeable lithium batteries.
- Replacement of the battery must be done by a Lenovo-authorized repair facility or technician.
- Only recharge the battery strictly according to instructions included in the product documentation.
- Lenovo-authorized repair facilities or technicians recycle Lenovo batteries according to local laws and regulations.

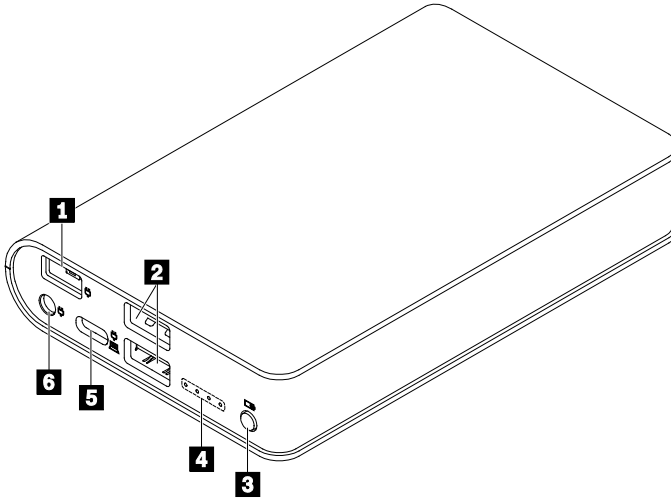
About the power bank

The Lenovo USB-C Laptop Power Bank (referred to as power bank) supplies power to your notebook computer, phone, and other mobile devices.

Your option package includes the following:

- Power bank
- USB-C™ to USB-C cable
- USB-C to slim tip adapter
- Documentation

Parts and locations

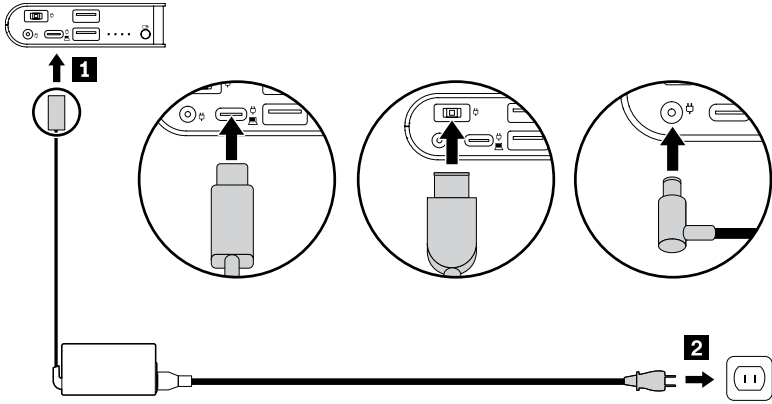


- 1** Slim tip connector Connect the USB-C power adapter (through the USB-C to slim tip adapter) or slim tip power adapter of your computer.
- 2** USB 2.0 connectors Connect to a mobile device.
- 3** Power button Press to start charging the connected devices.
- 4** Indicators Indicate the power bank status. See [Indicators](#).
- 5** USB-C connector Support bi-directional power delivery. Connect to the USB-C power adapter of your computer or a USB-C mobile device.
- 6** Round tip connector Connect to the round-tip power adapter of your computer.

Note: The USB-C, slim tip, or round tip power adapter comes with your computer and is not included in the option package.

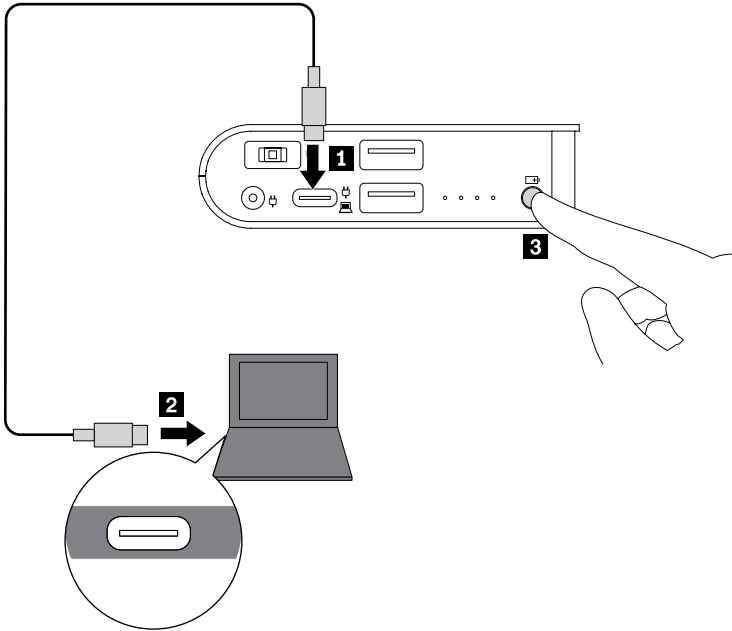
Charge the power bank

Connect the power adapter of your computer to the USB-C, slim tip, or round tip connector on the power bank. Then connect the power cord to an electrical outlet.

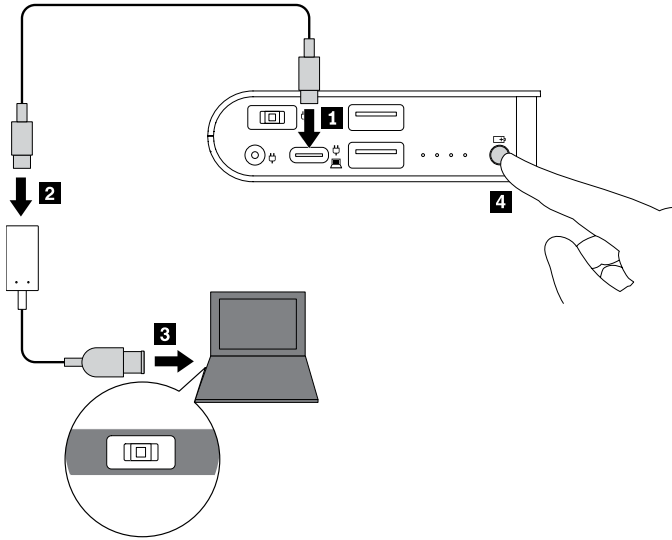


Charge your computer

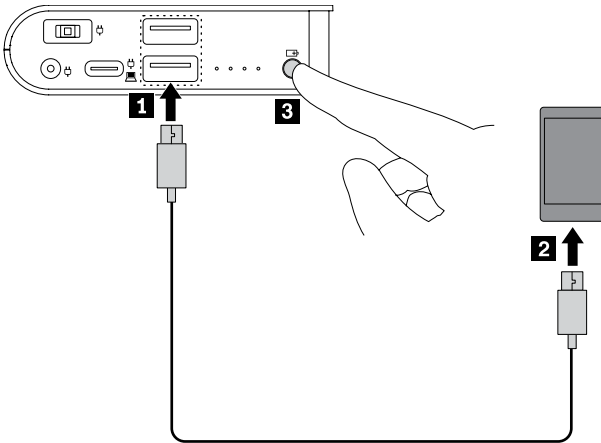
- Through the USB-C connector on your computer:



- Through the slim tip connector on your computer:

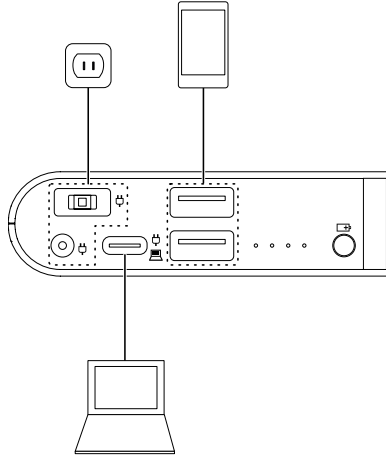


Charge your mobile device



Charge your computer, mobile devices, and power bank

When you connect the power bank to an electrical outlet, you can charge all the connected devices at the same time.



Indicators

Indicators behavior	Power bank status
On	Charging an external device
Blinking	Being charged
Off	Out of power

Troubleshooting

I can't charge my phone when connected to the USB-C connector on the power bank.

Do the following:

- Press the power button on the power bank.
- Press the power button on your phone.
- Reconnect your phone to the power bank.

If the problem still exists, connect your phone to the USB 2.0 connector on the power bank with the USB-C to USB-A cable that comes with your phone.

I cannot charge the power bank.

Use the Lenovo power adapter of your Lenovo computer to charge the power bank.

Specifications

Connector or cable	Requirement
Slim tip connector	Input: 20 V dc / 45 W minimum
Round tip connector	Input: 20 V dc / 45 W minimum
USB-C connector	Input: 5 V–20 V dc, 5 W–45 W Output: 5 V dc / 3 A, 9 V dc / 3 A, 15 V dc / 3 A, 20 V dc / 2.25 A
Two USB 2.0 connectors	Total output: 5 V dc / 2.1 A maximum
USB-C to slim tip adapter	Input: 20 V dc / 45 W minimum Output: 20 V dc / 45 W

Accessibility information

Documentation in accessible formats

Lenovo provides electronic documentation in accessible formats, such as properly tagged PDF files or HyperText Markup Language (HTML) files. Lenovo electronic documentation is developed to ensure that visually impaired users can read the documentation through a screen reader. Each image in the documentation also includes adequate alternative text to explain the image so that visually impaired users can understand the image when they use a screen reader.

To open and view PDF files, your computer must have the Adobe Reader program installed. The Adobe Reader program also is available for download at:

<http://www.adobe.com>

Lenovo, Einsteinova 21, 851 01 Bratislava, Slovakia



First Edition (April 2018)

© Copyright Lenovo 2018.

Lenovo and the Lenovo logo are trademarks of Lenovo in the United States, other countries, or both.

USB-C is a trademark of USB Implementers Forum.

Other company, product, and service names may be trademarks or service marks of others.

LIMITED AND RESTRICTED RIGHTS NOTICE: If data or software is delivered pursuant to a General Services Administration "GSA" contract, use, reproduction, or disclosure is subject to restrictions set forth in Contract No. GS-35F-05925.



SP40C84146