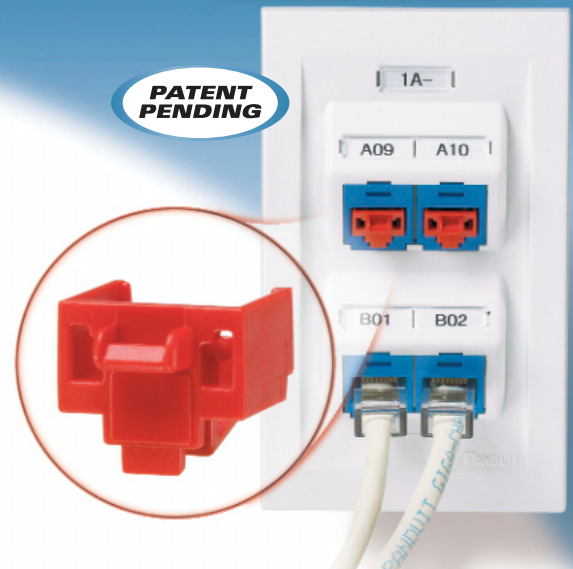


Jack Module Blockout Device

The Jack Module Blockout Device provides a simple and secure method to control access to data and deter vandalism to jacks. The Jack Module Blockout Device saves time and money associated with downtime, data security breaches, hardware replacement and infrastructure repair. The innovative design snaps into RJ45 jacks and is released with the special removal tool, ensuring the safety and security of your network infrastructure.



Key Features

Benefits

Tamper-resistant	Device blocks unauthorized access to jacks and potentially harmful foreign objects, saving time and money associated with data security breaches, network downtime, repair and hardware replacement
Versatile functionality	Compatible with most RJ45 jacks to accommodate a variety of applications and does not interfere with jack contacts
Compact, low profile design	Device can be installed or removed without interfering with adjacent jacks or hardware
Special removal tool	Device may only be released with the special removal tool, ensuring the safety and security of your network infrastructure

Installation and Removal Instructions



To install: snap the blockout device into the jack module



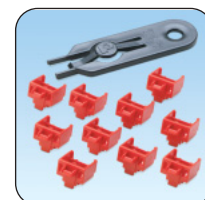
To release: insert the special removal tool which attaches to the blockout device



To remove: retract the device

Ordering Information

Part Number	Description	Color	Std. Pkg. Qty.	Std. Ctn. Qty.
PSL-DCJB	Package of 10 jack module blockout devices and 1 removal tool.	Red	1	10
PSL-DCJB-C	Package of 100 jack module blockout devices and 5 removal tools.	Red	1	10
PSL-DCJB-**	Package of 10 jack module blockout devices and 1 removal tool.	‡	1	10



‡For colors, replace ** in part number with BL (black), BU (blue), IW (International white) or YL (yellow).

Jack Module Blockout Device

Related Products

provides a wide variety of infrastructure solutions. The roadmap below shows applications for the Jack Module Blockout Device.



1



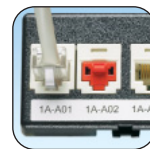
Faceplates

3



Computer
Data Jacks

5



Patch Panels

2



Surface
Mount Boxes

4



Zone
Cable Boxes